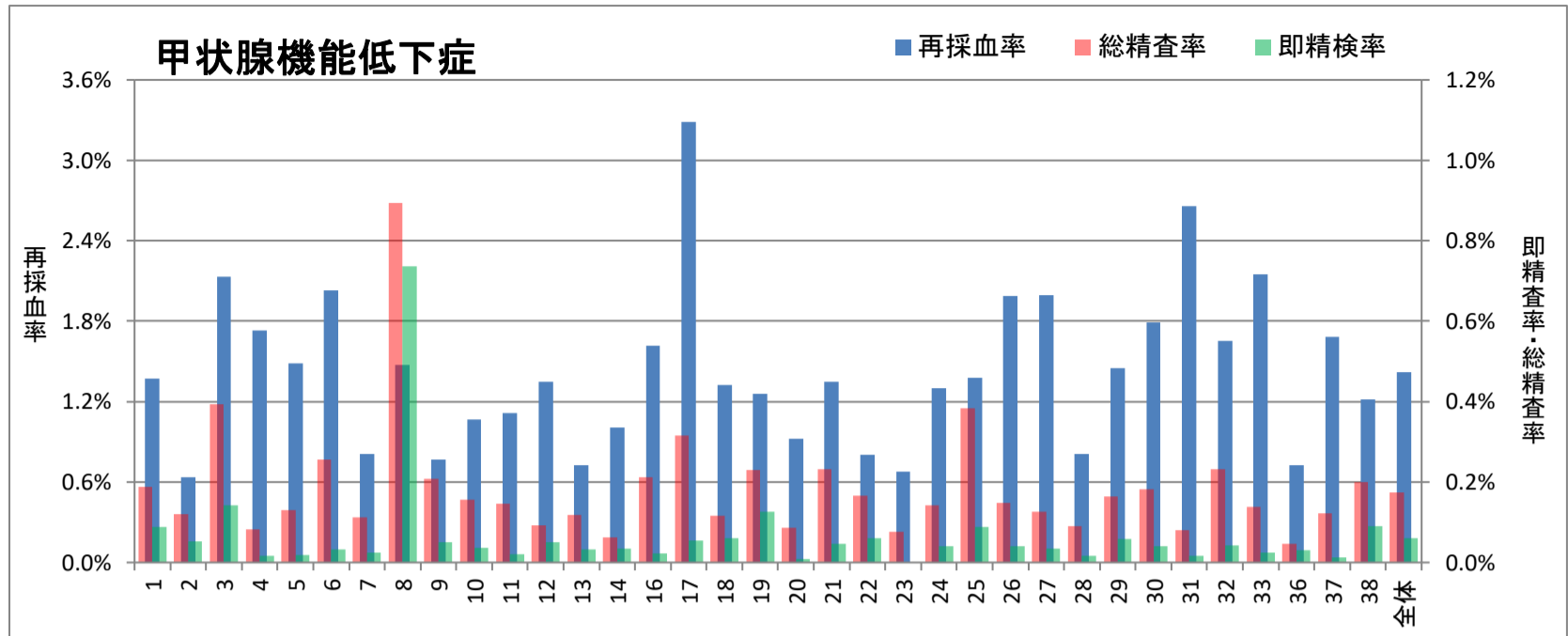


甲状腺機能低下症検査集計結果

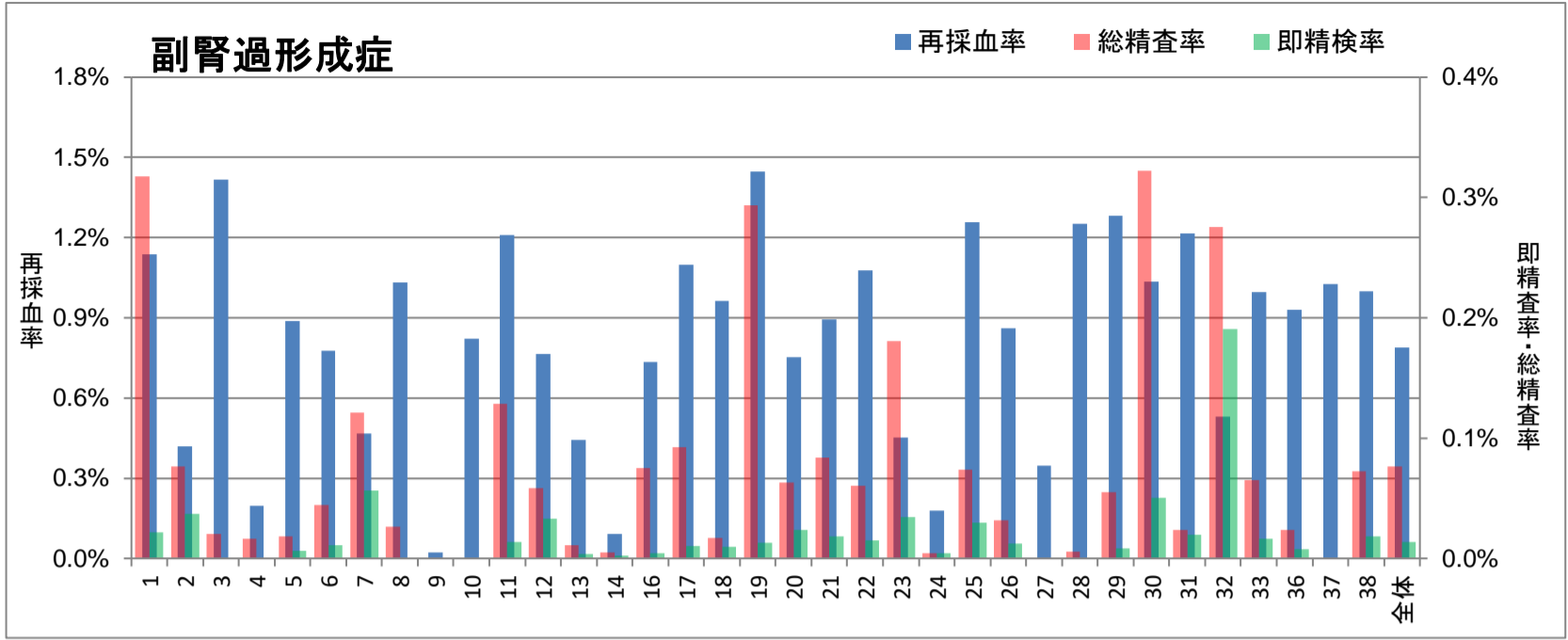
(2020年度結果)



ID	検査数	再採血数	即精査	再採血後精査	総精査数	発見患者数	再採血率	即精査率	再採血後精査率	総精査率	発見頻度	陽性適中率 (PPV)
1	55,080	757	49	55	104	28	1.374%	0.089%	0.100%	0.189%	1:1,967	26.92%
2	56,207	356	30	37	67	36	0.633%	0.053%	0.066%	0.119%	1:1,561	53.73%
3	19,834	423	28	50	78	25	2.133%	0.141%	0.252%	0.393%	1:793	32.05%
4	6,065	105	1	4	5	2	1.731%	0.016%	0.066%	0.082%	1:3,033	40.00%
5	16,223	241	3	18	21	0	1.486%	0.018%	0.111%	0.129%	-	0.00%
6	9,025	183	3	20	23	5	2.028%	0.033%	0.222%	0.255%	1:1,805	21.74%
7	12,400	100	3	11	14	4	0.806%	0.024%	0.089%	0.113%	1:3,100	28.57%
8	15,090	222	111	24	135	13	1.471%	0.736%	0.159%	0.895%	1:1,161	9.63%
9	13,910	107	7	22	29	18	0.769%	0.050%	0.158%	0.208%	1:773	62.07%
10	14,005	149	5	17	22	13	1.064%	0.036%	0.121%	0.157%	1:1,077	59.09%
11	28,752	320	6	36	42	16	1.113%	0.021%	0.125%	0.146%	1:1,797	38.10%
12	12,015	162	6	5	11	5	1.348%	0.050%	0.042%	0.092%	1:2,403	45.45%
13	89,202	648	29	77	106	62	0.726%	0.033%	0.086%	0.119%	1:1,439	58.49%
14	40,179	405	14	11	25	19	1.008%	0.035%	0.027%	0.062%	1:2,115	76.00%
16	22,696	367	5	43	48	22	1.617%	0.022%	0.189%	0.211%	1:1,032	45.83%
17	59,391	1,952	32	156	188	-	3.287%	0.054%	0.263%	0.317%	-	0.00%
18	41,033	544	25	23	48	28	1.326%	0.061%	0.056%	0.117%	1:1,465	58.33%
19	38,871	490	49	40	89	31	1.261%	0.126%	0.103%	0.229%	1:1,254	34.83%
20	12,639	117	1	10	11	7	0.926%	0.008%	0.079%	0.087%	1:1,806	63.64%
21	10,746	145	5	20	25	-	1.349%	0.047%	0.186%	0.233%	-	0.00%
22	6,593	53	4	7	11	5	0.804%	0.061%	0.106%	0.167%	1:1,319	45.45%
23	14,419	98	0	11	11	7	0.680%	0.000%	0.076%	0.076%	1:2,060	63.64%
24	68,307	887	27	70	97	-	1.299%	0.040%	0.102%	0.142%	-	0.00%
25	6,763	93	6	20	26	13	1.375%	0.089%	0.296%	0.384%	1:520	50.00%
26	47,675	949	19	52	71	20	1.991%	0.040%	0.109%	0.149%	1:2,384	28.17%
27	8,672	173	3	8	11	8	1.995%	0.035%	0.092%	0.127%	1:1,084	72.73%
28	17,904	145	3	13	16	7	0.810%	0.017%	0.073%	0.089%	1:2,558	43.75%
29	23,710	344	14	25	39	15	1.451%	0.059%	0.105%	0.164%	1:1,581	38.46%
30	9,938	178	4	14	18	9	1.791%	0.040%	0.141%	0.181%	1:1,104	50.00%
31	25,186	669	4	16	20	9	2.656%	0.016%	0.064%	0.079%	1:2,798	45.00%
32	4,724	78	2	9	11	0	1.651%	0.042%	0.191%	0.233%	-	0.00%
33	12,330	265	3	14	17	6	2.149%	0.024%	0.114%	0.138%	1:2,055	35.29%
36	12,795	93	4	2	6	3	0.727%	0.031%	0.016%	0.047%	1:4,265	50.00%
37	8,190	138	1	9	10	4	1.685%	0.012%	0.110%	0.122%	1:2,048	40.00%
38	5,509	67	5	6	11	5	1.216%	0.091%	0.109%	0.200%	1:1,102	45.45%
全体	846,078	12,023	511	955	1,466	445	1.421%	0.060%	0.113%	0.173%	1:1,901	30.35%
						max	3.287%	0.736%	0.296%	0.895%		76.00%
						min	0.633%	0.000%	0.016%	0.047%		0.00%

副腎過形成症検査集計結果

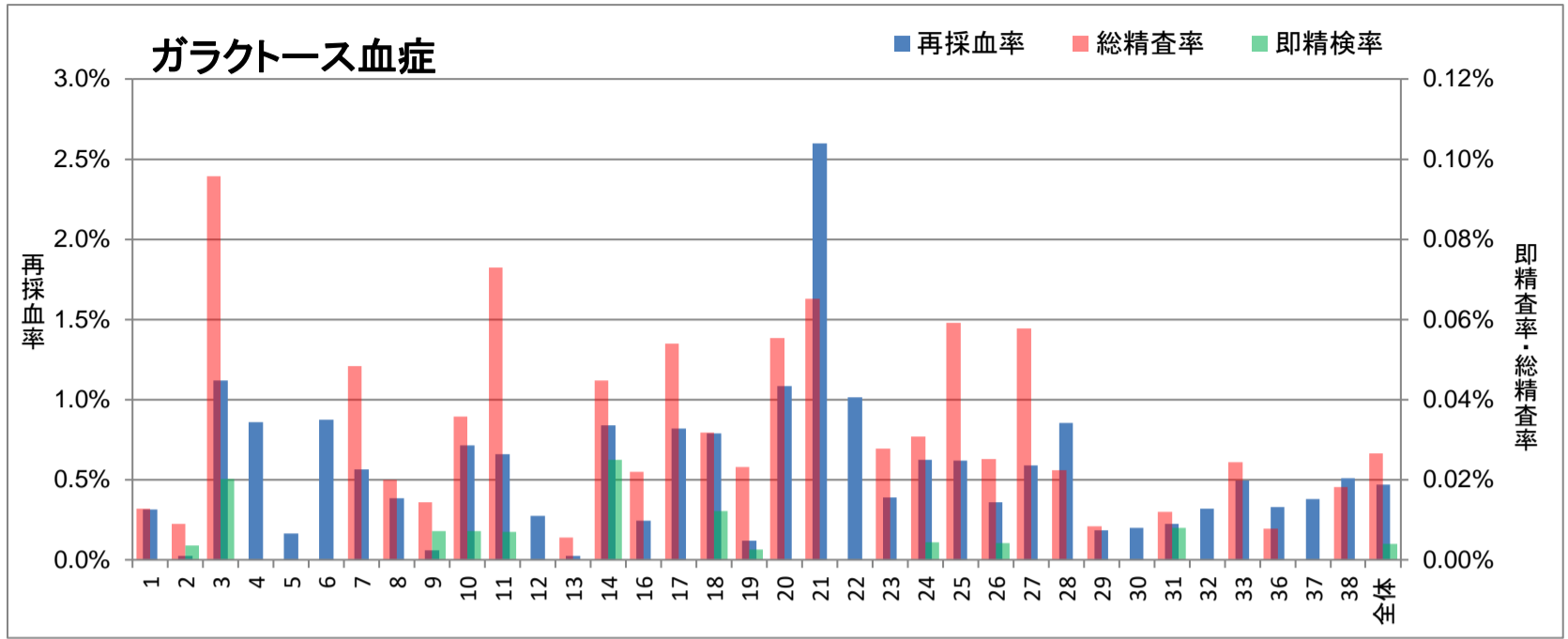
(2020年度結果)



ID	検査数	再採血数	即精検	再採血後精検	総精査数	発見患者数	再採血率	即精検率	再採血後精検率	総精査率	発見頻度	陽性適中率 (PPV)
1	55,080	627	12	163	175	2	1.138%	0.022%	0.296%	0.318%	1 : 27,540	1.14%
2	56,207	235	21	22	43	3	0.418%	0.037%	0.039%	0.077%	1 : 18,736	6.98%
3	19,834	281	0	4	4	0	1.417%	0.000%	0.020%	0.020%	-	0.00%
4	6,065	12	0	1	1	0	0.198%	0.000%	0.016%	0.016%	-	0.00%
5	16,223	144	1	2	3	0	0.888%	0.006%	0.012%	0.018%	-	0.00%
6	9,025	70	1	3	4	1	0.776%	0.011%	0.033%	0.044%	1 : 9,025	25.00%
7	12,400	58	7	8	15	1	0.468%	0.056%	0.065%	0.121%	1 : 12,400	6.67%
8	15,090	156	0	4	4	0	1.034%	0.000%	0.027%	0.027%	-	0.00%
9	13,910	3	0	0	0	0	0.022%	0.000%	0.000%	0.000%	-	-
10	14,005	115	0	0	0	0	0.821%	0.000%	0.000%	0.000%	-	-
11	28,752	348	4	33	37	3	1.210%	0.014%	0.115%	0.129%	1 : 9,584	8.11%
12	12,015	92	4	3	7	0	0.766%	0.033%	0.025%	0.058%	-	0.00%
13	89,202	395	3	7	10	3	0.443%	0.003%	0.008%	0.011%	1 : 29,734	30.00%
14	40,179	37	1	1	2	2	0.092%	0.002%	0.002%	0.005%	1 : 20,090	100.00%
16	22,696	167	1	16	17	4	0.736%	0.004%	0.070%	0.075%	1 : 5,674	23.53%
17	59,391	652	6	49	55		1.098%	0.010%	0.083%	0.093%	-	0.00%
18	41,033	395	4	3	7	4	0.963%	0.010%	0.007%	0.017%	1 : 10,258	57.14%
19	38,871	563	5	109	114	0	1.448%	0.013%	0.280%	0.293%	-	0.00%
20	12,639	95	3	5	8	1	0.752%	0.024%	0.040%	0.063%	1 : 12,639	12.50%
21	10,746	96	2	7	9		0.893%	0.019%	0.065%	0.084%	-	0.00%
22	6,593	71	1	3	4	1	1.077%	0.015%	0.046%	0.061%	1 : 6,593	25.00%
23	14,419	65	5	21	26	2	0.451%	0.035%	0.146%	0.180%	1 : 7,210	7.69%
24	68,307	123	3	0	3		0.180%	0.004%	0.000%	0.004%	-	0.00%
25	6,763	85	2	3	5	0	1.257%	0.030%	0.044%	0.074%	-	0.00%
26	47,675	411	6	9	15	0	0.862%	0.013%	0.019%	0.031%	-	0.00%
27	8,672	30	0	0	0		0.346%	0.000%	0.000%	0.000%	-	-
28	17,904	224	0	1	1	0	1.251%	0.000%	0.006%	0.006%	-	0.00%
29	23,710	304	2	11	13		1.282%	0.008%	0.046%	0.055%	-	0.00%
30	9,938	103	5	27	32	0	1.036%	0.050%	0.272%	0.322%	-	0.00%
31	25,186	306	5	1	6	3	1.215%	0.020%	0.004%	0.024%	1 : 8,395	50.00%
32	4,724	25	9	4	13	1	0.529%	0.191%	0.085%	0.275%	1 : 4,724	7.69%
33	12,330	123	2	6	8		0.998%	0.016%	0.049%	0.065%	-	0.00%
36	12,795	119	1	2	3	0	0.930%	0.008%	0.016%	0.023%	-	0.00%
37	8,190	84	0	0	0	0	1.026%	0.000%	0.000%	0.000%	-	-
38	5,509	55	1	3	4	0	0.998%	0.018%	0.054%	0.073%	-	0.00%
全体	846,078	6,669	117	531	648	31	0.788%	0.014%	0.063%	0.077%	1 : 27,293	4.78%
						max	1.448%	0.191%	0.296%	0.322%		100.00%
						min	0.022%	0.000%	0.000%	0.000%		0.00%

ガラクトース血症検査集計結果

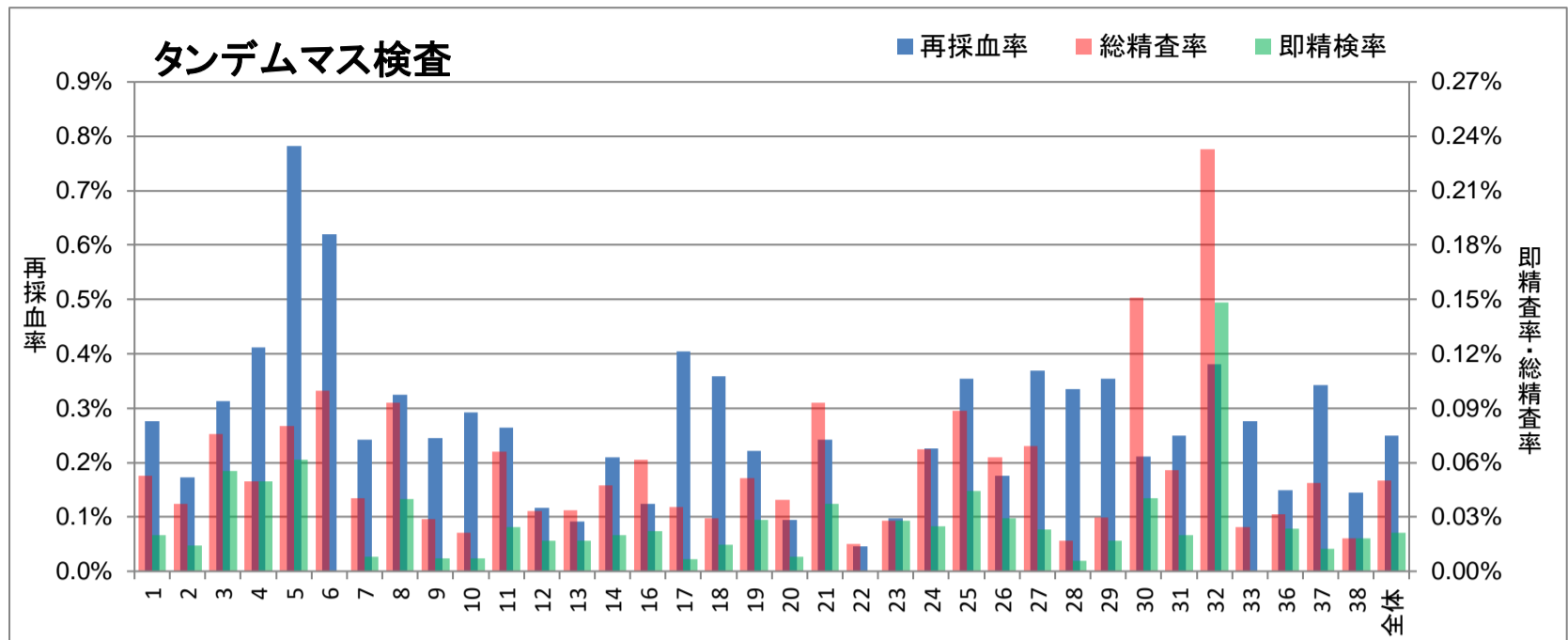
(2020年度結果)



ID	検査数	再採血数	即精検	再採血後精検	総精査数	発見患者数	再採血率	即精検率	再採血後精検率	総精査率	発見頻度	陽性適中率 (PPV)
1	55,080	173	0	7	7	0	0.314%	0.000%	0.013%	0.013%	-	0.00%
2	56,207	15	2	3	5	2	0.027%	0.004%	0.005%	0.009%	1 : 28,104	40.00%
3	19,834	222	4	15	19	0	1.119%	0.020%	0.076%	0.096%	-	0.00%
4	6,065	52	0	0	0	0	0.857%	0.000%	0.000%	0.000%	-	-
5	16,223	27	0	0	0	0	0.166%	0.000%	0.000%	0.000%	-	-
6	9,025	79	0	0	0	0	0.875%	0.000%	0.000%	0.000%	-	-
7	12,400	70	0	6	6	0	0.565%	0.000%	0.048%	0.048%	-	0.00%
8	15,090	58	0	3	3	1	0.384%	0.000%	0.020%	0.020%	1 : 15,090	33.33%
9	13,910	8	1	1	2	1	0.058%	0.007%	0.007%	0.014%	1 : 13,910	50.00%
10	14,005	100	1	4	5	2	0.714%	0.007%	0.029%	0.036%	1 : 7,003	40.00%
11	28,752	190	2	19	21	4	0.661%	0.007%	0.066%	0.073%	1 : 7,188	19.05%
12	12,015	33	0	0	0	0	0.275%	0.000%	0.000%	0.000%	-	-
13	89,202	21	0	5	5	2	0.024%	0.000%	0.006%	0.006%	1 : 44,601	40.00%
14	40,179	337	10	8	18	2	0.839%	0.025%	0.020%	0.045%	1 : 20,090	11.11%
16	22,696	56	0	5	5	0	0.247%	0.000%	0.022%	0.022%	-	0.00%
17	59,391	485	0	32	32	0	0.817%	0.000%	0.054%	0.054%	-	0.00%
18	41,033	323	5	8	13	0	0.787%	0.012%	0.019%	0.032%	-	0.00%
19	38,871	47	1	8	9	2	0.121%	0.003%	0.021%	0.023%	1 : 19,436	22.22%
20	12,639	137	0	7	7	0	1.084%	0.000%	0.055%	0.055%	-	0.00%
21	10,746	279	0	7	7	0	2.596%	0.000%	0.065%	0.065%	-	0.00%
22	6,593	67	0	0	0	0	1.016%	0.000%	0.000%	0.000%	-	-
23	14,419	56	0	4	4	0	0.388%	0.000%	0.028%	0.028%	-	0.00%
24	68,307	428	3	18	21	0	0.627%	0.004%	0.026%	0.031%	-	0.00%
25	6,763	42	0	4	4	0	0.621%	0.000%	0.059%	0.059%	-	0.00%
26	47,675	171	2	10	12	0	0.359%	0.004%	0.021%	0.025%	-	0.00%
27	8,672	51	0	5	5	0	0.588%	0.000%	0.058%	0.058%	-	0.00%
28	17,904	153	0	4	4	2	0.855%	0.000%	0.022%	0.022%	1 : 8,952	50.00%
29	23,710	44	0	2	2	0	0.186%	0.000%	0.008%	0.008%	-	0.00%
30	9,938	20	0	0	0	0	0.201%	0.000%	0.000%	0.000%	-	-
31	25,186	57	2	1	3	0	0.226%	0.008%	0.004%	0.012%	-	0.00%
32	4,724	15	0	0	0	0	0.318%	0.000%	0.000%	0.000%	-	-
33	12,330	61	0	3	3	0	0.495%	0.000%	0.024%	0.024%	-	0.00%
36	12,795	42	0	1	1	0	0.328%	0.000%	0.008%	0.008%	-	0.00%
37	8,190	31	0	0	0	0	0.379%	0.000%	0.000%	0.000%	-	-
38	5,509	28	0	1	1	0	0.508%	0.000%	0.018%	0.018%	-	0.00%
全体	846,078	3,978	33	191	224	18	0.470%	0.004%	0.023%	0.026%	1 : 47,004	8.04%
max							2.596%	0.025%	0.076%	0.096%		50.00%
min							0.024%	0.000%	0.000%	0.000%		0.00%

タンデムマス検査集計結果

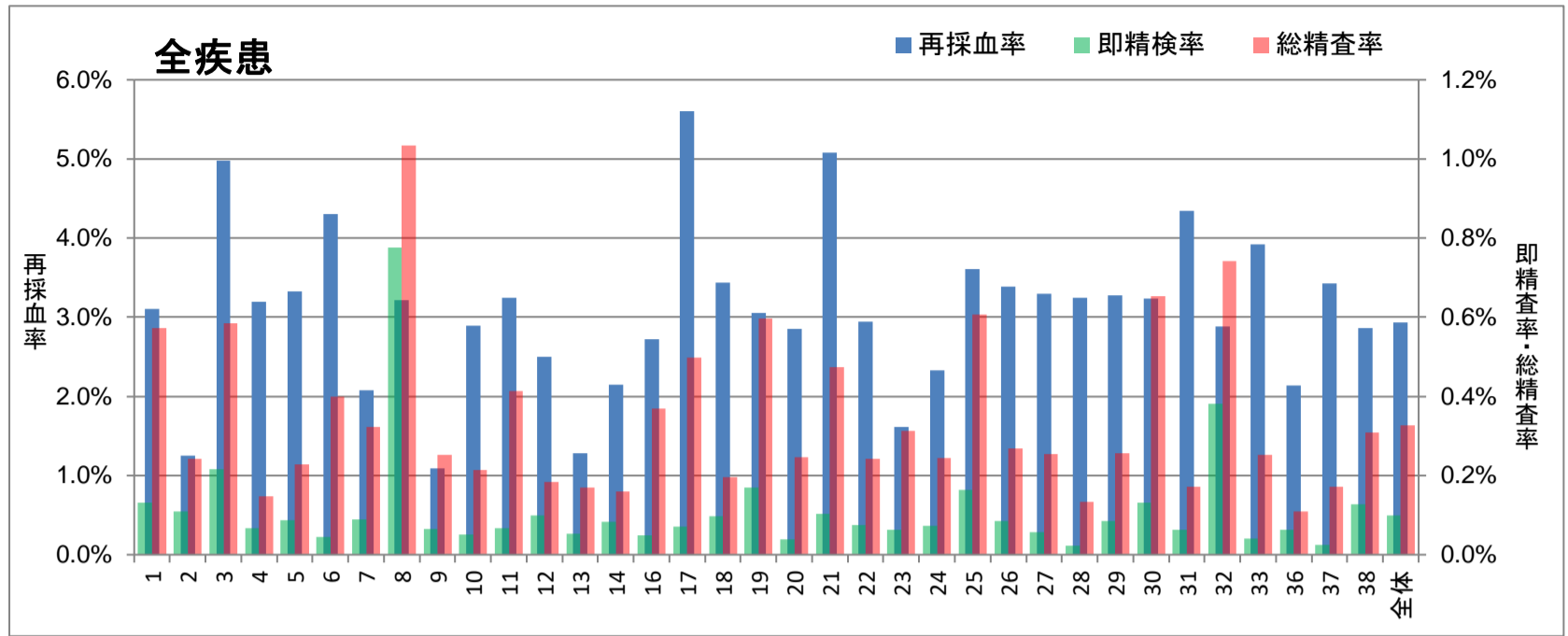
(2020年度結果)



ID	検査数	再採血数	即精検	再採血後精検	総精査数	発見患者数	再採血率	即精検率	再採血後精検率	総精査率	発見頻度	陽性適中率 (PPV)
1	55,080	152	11	18	29	13	0.276%	0.020%	0.033%	0.053%	1:4,237	44.83%
2	56,207	97	8	13	21	6	0.173%	0.014%	0.023%	0.037%	1:9,368	28.57%
3	19,834	62	11	4	15	2	0.313%	0.055%	0.020%	0.076%	1:9,917	13.33%
4	6,065	25	3	0	3	1	0.412%	0.049%	0.000%	0.049%	1:6,065	33.33%
5	16,223	127	10	3	13	1	0.783%	0.062%	0.018%	0.080%	1:16,223	7.69%
6	9,025	56		9	9	1	0.620%	0.000%	0.100%	0.100%	1:9,025	11.11%
7	12,400	30	1	4	5	1	0.242%	0.008%	0.032%	0.040%	1:12,400	20.00%
8	15,090	49	6	8	14	4	0.325%	0.040%	0.053%	0.093%	1:3,773	28.57%
9	13,910	34	1	3	4	3	0.244%	0.007%	0.022%	0.029%	1:4,637	75.00%
10	14,005	41	1	2	3	2	0.293%	0.007%	0.014%	0.021%	1:7,003	66.67%
11	28,752	76	7	12	19	5	0.264%	0.024%	0.042%	0.066%	1:5,750	26.32%
12	12,015	14	2	2	4	1	0.117%	0.017%	0.017%	0.033%	1:12,015	25.00%
13	89,202	82	15	15	30	7	0.092%	0.017%	0.017%	0.034%	1:12,743	23.33%
14	40,179	84	8	11	19	8	0.209%	0.020%	0.027%	0.047%	1:5,022	42.11%
16	22,696	28	5	9	14	0	0.123%	0.022%	0.040%	0.062%	-	0.00%
17	59,391	240	4	17	21		0.404%	0.007%	0.029%	0.035%	-	0.00%
18	41,033	147	6	6	12	2	0.358%	0.015%	0.015%	0.029%	1:20,517	16.67%
19	38,871	86	11	9	20	2	0.221%	0.028%	0.023%	0.051%	1:19,436	10.00%
20	12,639	12	1	4	5	2	0.095%	0.008%	0.032%	0.040%	1:6,320	40.00%
21	10,746	26	4	6	10		0.242%	0.037%	0.056%	0.093%	-	0.00%
22	6,593	3		1	1		0.046%	0.000%	0.015%	0.015%	-	0.00%
23	14,419	14	4	0	4	3	0.097%	0.028%	0.000%	0.028%	1:4,806	75.00%
24	68,307	154	17	29	46		0.225%	0.025%	0.042%	0.067%	-	0.00%
25	6,763	24	3	3	6	2	0.355%	0.044%	0.044%	0.089%	1:3,382	33.33%
26	47,675	84	14	16	30	6	0.176%	0.029%	0.034%	0.063%	1:7,946	20.00%
27	8,672	32	2	4	6	3	0.369%	0.023%	0.046%	0.069%	1:2,891	50.00%
28	17,904	60	1	2	3	1	0.335%	0.006%	0.011%	0.017%	1:17,904	33.33%
29	23,710	84	4	3	7	2	0.354%	0.017%	0.013%	0.030%	1:11,855	28.57%
30	9,938	21	4	11	15	1	0.211%	0.040%	0.111%	0.151%	1:9,938	6.67%
31	25,186	63	5	9	14	4	0.250%	0.020%	0.036%	0.056%	1:6,297	28.57%
32	4,724	18	7	4	11	0	0.381%	0.148%	0.085%	0.233%	-	0.00%
33	12,330	34		3	3		0.276%	0.000%	0.024%	0.024%	-	0.00%
36	12,795	19	3	1	4	1	0.148%	0.023%	0.008%	0.031%	1:12,795	25.00%
37	8,190	28	1	3	4	0	0.342%	0.012%	0.037%	0.049%	-	0.00%
38	5,509	8	1	0	1	0	0.145%	0.018%	0.000%	0.018%	-	0.00%
全体	846,078	2,114	181	244	425	84	0.250%	0.021%	0.029%	0.050%	1:10,072	19.76%
						max	0.783%	0.148%	0.111%	0.233%		75.00%
						min	0.046%	0.000%	0.000%	0.015%		0.00%

新生児スクリーニング検査集計結果(全疾患)

(2020年度結果)



ID	検査数	再採血数	即精検	再採血後精検	総精査数	発見患者数	再採血率	即精検率	再採血後精検率	総精査率	発見頻度	陽性適中率 (PPV)
1	55,080	1,709	72	243	315	43	3.103%	0.131%	0.441%	0.572%	1:1,281	13.65%
2	56,207	703	61	75	136	47	1.251%	0.109%	0.133%	0.242%	1:1,196	34.56%
3	19,834	988	43	73	116	27	4.981%	0.217%	0.368%	0.585%	1:735	23.28%
4	6,065	194	4	5	9	3	3.199%	0.066%	0.082%	0.148%	1:2,022	33.33%
5	16,223	539	14	23	37	1	3.322%	0.086%	0.142%	0.228%	1:16,223	2.70%
6	9,025	388	4	32	36	7	4.299%	0.044%	0.355%	0.399%	1:1,289	19.44%
7	12,400	258	11	29	40	6	2.081%	0.089%	0.234%	0.323%	1:2,067	15.00%
8	15,090	485	117	39	156	18	3.214%	0.775%	0.258%	1.034%	1:838	11.54%
9	13,910	152	9	26	35	22	1.093%	0.065%	0.187%	0.252%	1:632	62.86%
10	14,005	405	7	23	30	17	2.892%	0.050%	0.164%	0.214%	1:824	56.67%
11	28,752	934	19	100	119	28	3.248%	0.066%	0.348%	0.414%	1:1,027	23.53%
12	12,015	301	12	10	22	6	2.505%	0.100%	0.083%	0.183%	1:2,003	27.27%
13	89,202	1,146	47	104	151	74	1.285%	0.053%	0.117%	0.169%	1:1,205	49.01%
14	40,179	863	33	31	64	31	2.148%	0.082%	0.077%	0.159%	1:1,296	48.44%
16	22,696	618	11	73	84	26	2.723%	0.048%	0.322%	0.370%	1:873	30.95%
17	59,391	3,329	42	254	296	0	5.605%	0.071%	0.428%	0.498%	-	0.00%
18	41,033	1,409	40	40	80	34	3.434%	0.097%	0.097%	0.195%	1:1,207	42.50%
19	38,871	1,186	66	166	232	35	3.051%	0.170%	0.427%	0.597%	1:1,111	15.09%
20	12,639	361	5	26	31	10	2.856%	0.040%	0.206%	0.245%	1:1,264	32.26%
21	10,746	546	11	40	51	0	5.081%	0.102%	0.372%	0.475%	-	0.00%
22	6,593	194	5	11	16	6	2.943%	0.076%	0.167%	0.243%	1:1,099	37.50%
23	14,419	233	9	36	45	12	1.616%	0.062%	0.250%	0.312%	1:1,202	26.67%
24	68,307	1,592	50	117	167	0	2.331%	0.073%	0.171%	0.244%	-	0.00%
25	6,763	244	11	30	41	15	3.608%	0.163%	0.444%	0.606%	1:451	36.59%
26	47,675	1,615	41	87	128	26	3.388%	0.086%	0.182%	0.268%	1:1,834	20.31%
27	8,672	286	5	17	22	11	3.298%	0.058%	0.196%	0.254%	1:788	50.00%
28	17,904	582	4	20	24	10	3.251%	0.022%	0.112%	0.134%	1:1,790	41.67%
29	23,710	776	20	41	61	17	3.273%	0.084%	0.173%	0.257%	1:1,395	27.87%
30	9,938	322	13	52	65	10	3.240%	0.131%	0.523%	0.654%	1:994	15.38%
31	25,186	1,095	16	27	43	16	4.348%	0.064%	0.107%	0.171%	1:1,574	37.21%
32	4,724	136	18	17	35	1	2.879%	0.381%	0.360%	0.741%	1:4,724	2.86%
33	12,330	483	5	26	31	6	3.917%	0.041%	0.211%	0.251%	1:2,055	19.35%
36	12,795	273	8	6	14	4	2.134%	0.063%	0.047%	0.109%	1:3,199	28.57%
37	8,190	281	2	12	14	4	3.431%	0.024%	0.147%	0.171%	1:2,048	28.57%
38	5,509	158	7	10	17	5	2.868%	0.127%	0.182%	0.309%	1:1,102	29.41%
全体	846,078	24,784	842	1,921	2,763	578	2.929%	0.100%	0.227%	0.327%	1:1,464	20.92%
max							5.605%	0.775%	0.523%	1.034%		62.86%
min							1.093%	0.022%	0.047%	0.109%		0.00%