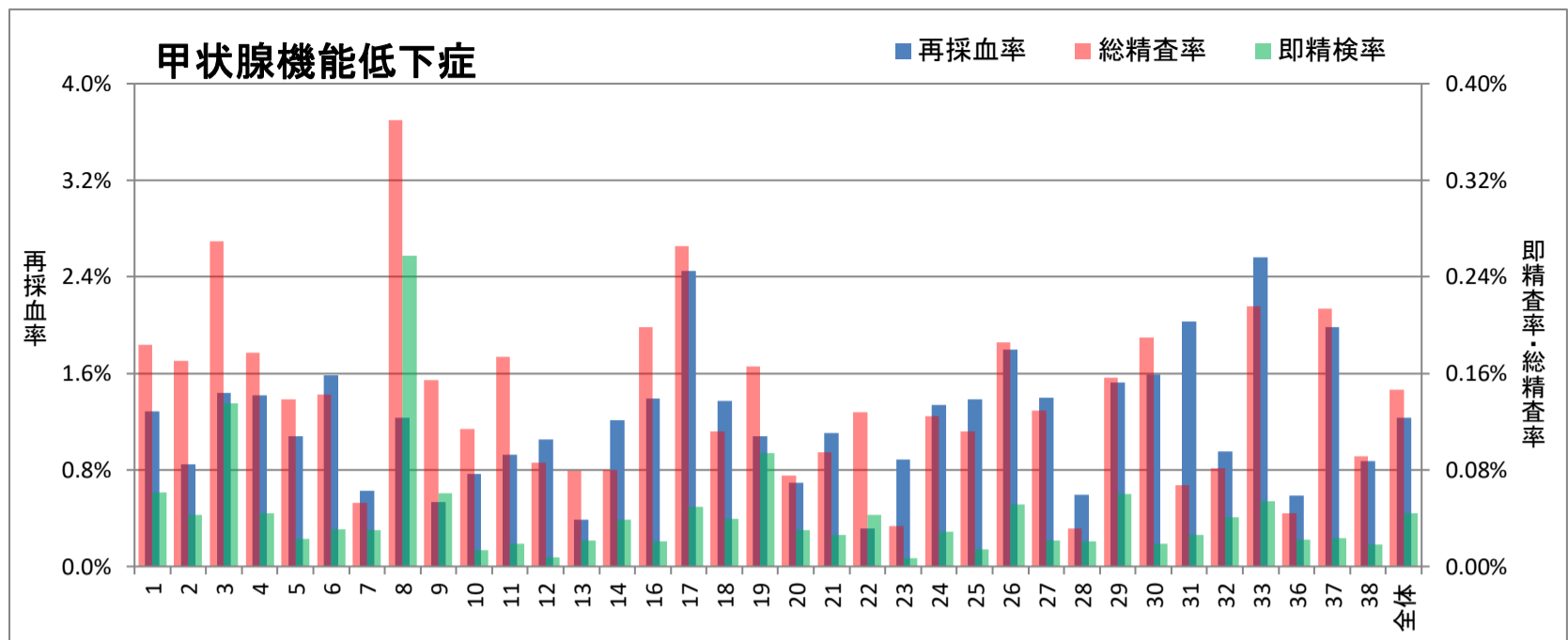


# 甲状腺機能低下症検査集計結果

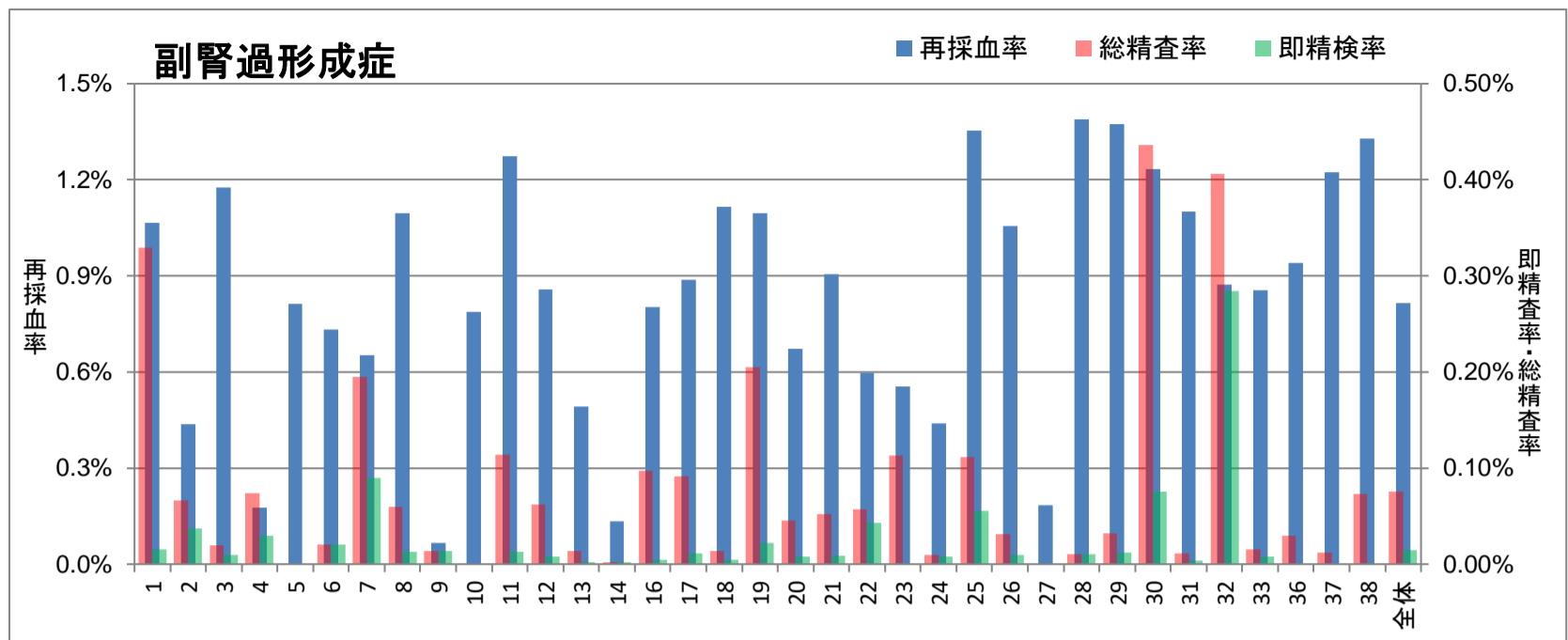
(2019年度結果)



ID	検査数	再採血数	即精検	再採血後精検	総精査数	発見患者数	再採血率	即精検率	再採血後精検率	総精査率	発見頻度	陽性適中率 (PPV)
1	57,136	735	35	70	105	44	1.29%	0.06%	0.12%	0.184%	1:1,299	41.9%
2	58,806	498	25	75	100	21	0.85%	0.04%	0.13%	0.170%	1:2,800	21.0%
3	20,761	298	28	28	56	26	1.44%	0.13%	0.13%	0.270%	1:799	46.4%
4	6,773	96	3	9	12	7	1.42%	0.04%	0.13%	0.177%	1:968	58.3%
5	17,355	187	4	20	24	14	1.08%	0.02%	0.12%	0.138%	1:1,240	58.3%
6	9,830	156	3	11	14	3	1.59%	0.03%	0.11%	0.142%	1:3,277	21.4%
7	13,349	84	4	3	7	4	0.63%	0.03%	0.02%	0.052%	1:3,337	57.1%
8	15,155	187	39	17	56	7	1.23%	0.26%	0.11%	0.370%	1:2,165	12.5%
9	14,864	79	9	14	23	15	0.53%	0.06%	0.09%	0.155%	1:991	65.2%
10	14,971	115	2	15	17	10	0.77%	0.01%	0.10%	0.114%	1:1,497	58.8%
11	31,669	293	6	49	55	21	0.93%	0.02%	0.15%	0.174%	1:1,508	38.2%
12	12,839	135	1	10	11	6	1.05%	0.01%	0.08%	0.086%	1:2,140	54.5%
13	93,480	362	20	54	74	34	0.39%	0.02%	0.06%	0.079%	1:2,749	45.9%
14	41,417	502	16	17	33	19	1.21%	0.04%	0.04%	0.080%	1:2,180	57.6%
16	23,703	330	5	42	47	20	1.39%	0.02%	0.18%	0.198%	1:1,185	42.6%
17	62,545	1,533	31	135	166	0	2.45%	0.05%	0.22%	0.265%	-	0.0%
18	42,801	588	17	31	48	20	1.37%	0.04%	0.07%	0.112%	1:2,140	41.7%
19	40,476	437	38	29	67	25	1.08%	0.09%	0.07%	0.166%	1:1,619	37.3%
20	13,258	92	4	6	10	6	0.69%	0.03%	0.05%	0.075%	1:2,210	60.0%
21	11,598	128	3	8	11	0	1.10%	0.03%	0.07%	0.095%	-	0.0%
22	7,044	22	3	6	9	4	0.31%	0.04%	0.09%	0.128%	1:1,761	44.4%
23	14,986	133	1	4	5	5	0.89%	0.01%	0.03%	0.033%	1:2,997	100.0%
24	52,111	698	15	50	65	0	1.34%	0.03%	0.10%	0.125%	-	0.0%
25	7,165	99	1	7	8	5	1.38%	0.01%	0.10%	0.112%	1:1,433	62.5%
26	50,628	908	26	68	94	36	1.79%	0.05%	0.13%	0.186%	1:1,406	38.3%
27	9,301	130	2	10	12	5	1.40%	0.02%	0.11%	0.129%	1:1,860	41.7%
28	19,023	113	4	2	6	0	0.59%	0.02%	0.01%	0.032%	-	0.0%
29	24,894	379	15	24	39	9	1.52%	0.06%	0.10%	0.157%	1:2,766	23.1%
30	10,548	168	2	18	20	10	1.59%	0.02%	0.17%	0.190%	1:1,055	50.0%
31	26,824	544	7	11	18	8	2.03%	0.03%	0.04%	0.067%	1:3,353	44.4%
32	4,925	47	2	2	4	0	0.95%	0.04%	0.04%	0.081%	-	0.0%
33	12,985	333	7	21	28	0	2.56%	0.05%	0.16%	0.216%	-	0.0%
36	13,604	80	3	3	6	0	0.59%	0.02%	0.02%	0.044%	-	0.0%
37	8,416	167	2	16	18	8	1.98%	0.02%	0.19%	0.214%	1:1,052	44.4%
38	5,499	48	1	4	5	4	0.87%	0.02%	0.07%	0.091%	1:1,375	80.0%
全体	870,739	10,704	384	889	1,273	396	1.23%	0.04%	0.10%	0.146%	1:2,199	31.1%
						max	2.564%	0.257%	0.216%	0.370%		100.0%
						min	0.3123%	0.0067%	0.0105%	0.0315%		0.0%

副腎過形成症検査集計結果

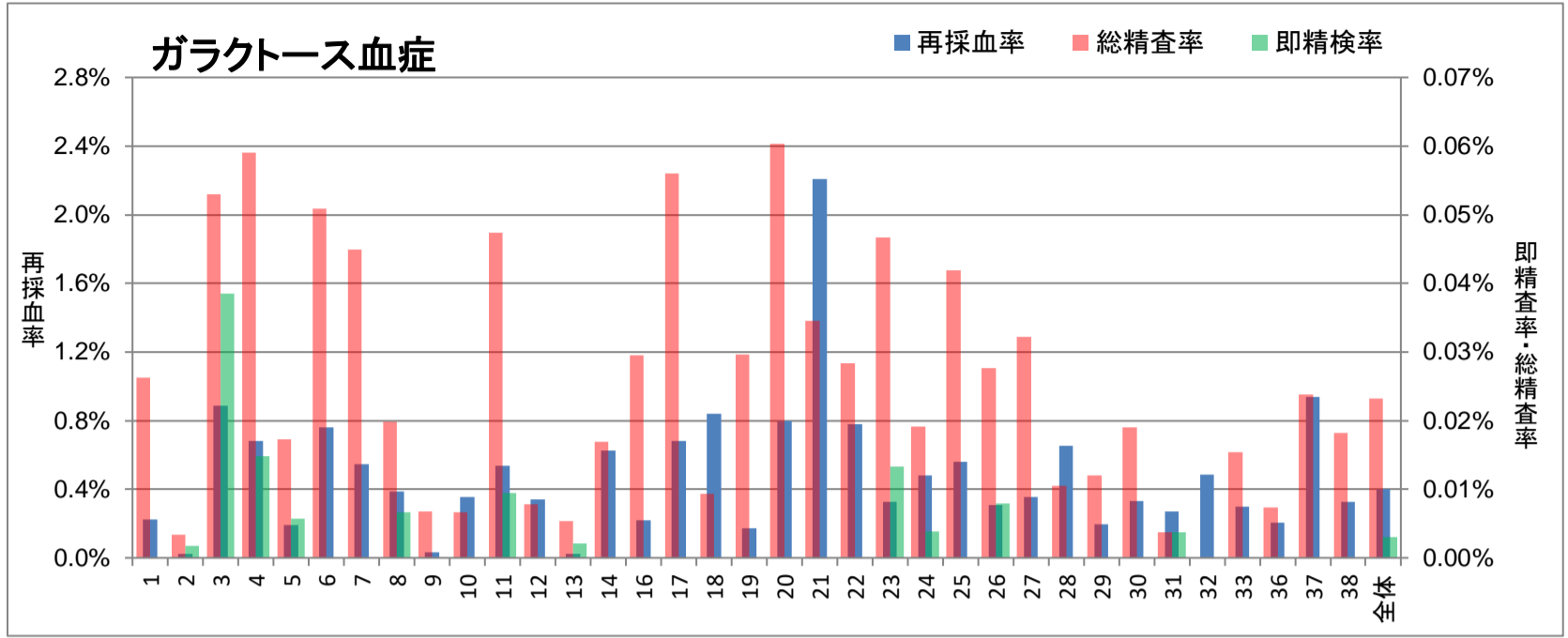
(2019年度結果)



ID	検査数	再採血数	即精検	再採血後精検	総精査数	発見患者数	再採血率	即精検率	再採血後精検率	総精査率	発見頻度	陽性適中率 (PPV)
1	57,136	609	9	179	188	5	1.07%	0.02%	0.31%	0.329%	1 : 11,427	2.7%
2	58,806	257	22	17	39	0	0.44%	0.04%	0.03%	0.066%	-	0.0%
3	20,761	244	2	2	4	2	1.18%	0.01%	0.01%	0.019%	1 : 10,381	50.0%
4	6,773	12	2	3	5	2	0.18%	0.03%	0.04%	0.074%	1 : 3,387	40.0%
5	17,355	141	0	0	0	0	0.81%	0.00%	0.00%	0.000%	-	-
6	9,830	72	2	0	2	0	0.73%	0.02%	0.00%	0.020%	-	0.0%
7	13,349	87	12	14	26	1	0.65%	0.09%	0.10%	0.195%	1 : 13,349	3.8%
8	15,155	166	2	7	9	0	1.10%	0.01%	0.05%	0.059%	-	0.0%
9	14,864	10	2	0	2	2	0.07%	0.01%	0.00%	0.013%	1 : 7,432	100.0%
10	14,971	118	0	0	0	0	0.79%	0.00%	0.00%	0.000%	-	-
11	31,669	403	4	32	36	2	1.27%	0.01%	0.10%	0.114%	1 : 15,835	5.6%
12	12,839	110	1	7	8	0	0.86%	0.01%	0.05%	0.062%	-	0.0%
13	93,480	460	2	11	13	3	0.49%	0.00%	0.01%	0.014%	1 : 31,160	23.1%
14	41,417	55	1	0	1	1	0.13%	0.00%	0.00%	0.002%	1 : 41,417	100.0%
16	23,703	190	1	22	23	0	0.80%	0.00%	0.09%	0.097%	-	0.0%
17	62,545	556	7	50	57	0	0.89%	0.01%	0.08%	0.091%	-	0.0%
18	42,801	478	2	4	6	3	1.12%	0.00%	0.01%	0.014%	1 : 14,267	50.0%
19	40,476	444	9	74	83	2	1.10%	0.02%	0.18%	0.205%	1 : 20,238	2.4%
20	13,258	89	1	5	6	0	0.67%	0.01%	0.04%	0.045%	-	0.0%
21	11,598	105	1	5	6		0.91%	0.01%	0.04%	0.052%	-	0.0%
22	7,044	42	3	1	4	1	0.60%	0.04%	0.01%	0.057%	1 : 7,044	25.0%
23	14,986	83	0	17	17	0	0.55%	0.00%	0.11%	0.113%	-	0.0%
24	52,111	229	4	1	5		0.44%	0.01%	0.00%	0.010%	-	0.0%
25	7,165	97	4	4	8	1	1.35%	0.06%	0.06%	0.112%	1 : 7,165	12.5%
26	50,628	535	5	11	16	2	1.06%	0.01%	0.02%	0.032%	1 : 25,314	12.5%
27	9,301	17	0	0	0		0.18%	0.00%	0.00%	0.000%	-	-
28	19,023	264	2	0	2	2	1.39%	0.01%	0.00%	0.011%	1 : 9,512	100.0%
29	24,894	342	3	5	8	1	1.37%	0.01%	0.02%	0.032%	1 : 24,894	12.5%
30	10,548	130	8	38	46	1	1.23%	0.08%	0.36%	0.436%	1 : 10,548	2.2%
31	26,824	295	1	2	3	1	1.10%	0.00%	0.01%	0.011%	1 : 26,824	33.3%
32	4,925	43	14	6	20	0	0.87%	0.28%	0.12%	0.406%	-	0.0%
33	12,985	111	1	1	2		0.85%	0.01%	0.01%	0.015%	-	0.0%
36	13,604	128	0	4	4	0	0.94%	0.00%	0.03%	0.029%	-	0.0%
37	8,416	103	0	1	1	1	1.22%	0.00%	0.01%	0.012%	1 : 8,416	100.0%
38	5,499	73	0	4	4	0	1.33%	0.00%	0.07%	0.073%	-	0.0%
全体	870,739	7,098	127	527	654	33	0.82%	0.01%	0.06%	0.075%	1 : 26,386	5.0%
						max	1.388%	0.284%	0.360%	0.436%		100.0%
						min	0.0673%	0.0000%	0.0000%	0.0000%		0.0%

ガラクトース血症検査集計結果

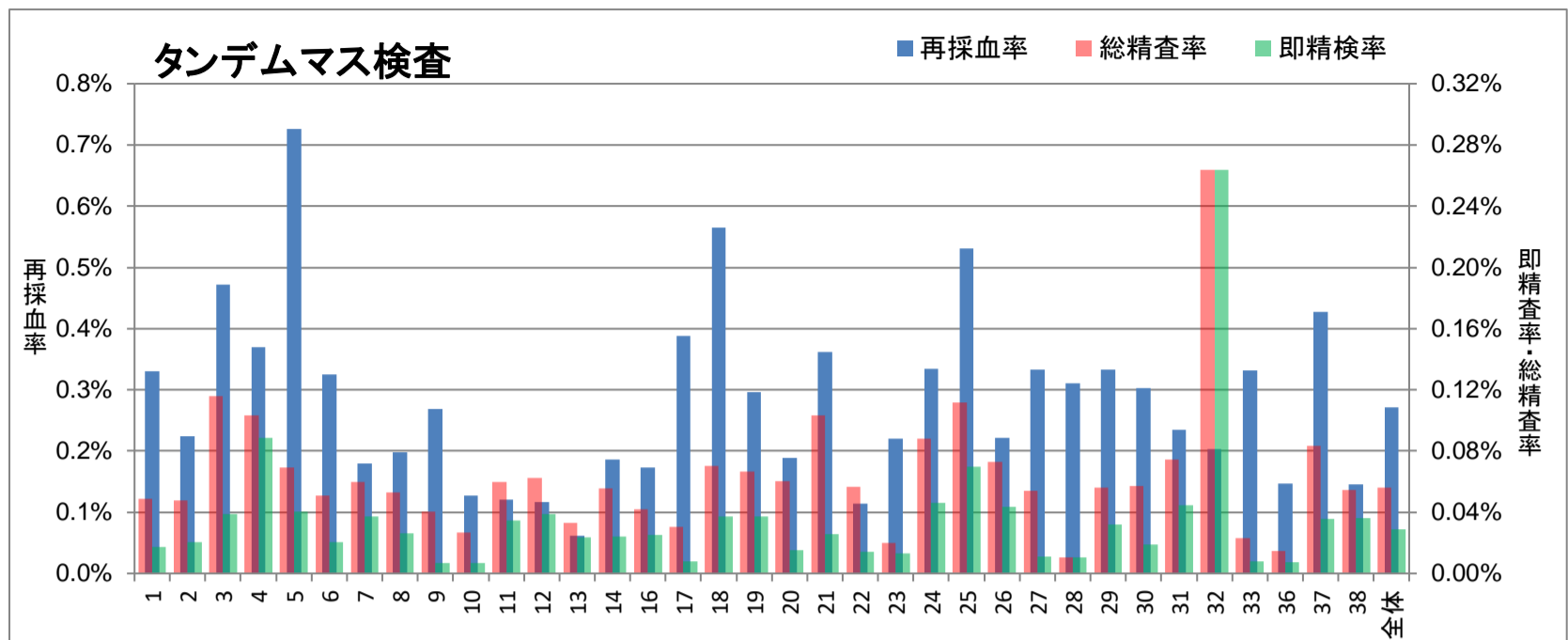
(2019年度結果)



ID	検査数	再採血数	即精検	再採血後精検	総精査数	発見患者数	再採血率	即精検率	再採血後精検率	総精査率	発見頻度	陽性適中率 (PPV)
1	57,136	127	0	15	15	0	0.22%	0.00%	0.03%	0.026%	-	0.0%
2	58,806	14	1	1	2	1	0.02%	0.00%	0.00%	0.003%	1 : 58,806	50.0%
3	20,761	184	8	3	11	1	0.89%	0.04%	0.01%	0.053%	1 : 20,761	9.1%
4	6,773	46	1	3	4	0	0.68%	0.01%	0.04%	0.059%	-	0.0%
5	17,355	33	1	2	3	0	0.19%	0.01%	0.01%	0.017%	-	0.0%
6	9,830	75	0	5	5	0	0.76%	0.00%	0.05%	0.051%	-	0.0%
7	13,349	73	0	6	6	0	0.55%	0.00%	0.04%	0.045%	-	0.0%
8	15,155	59	1	2	3	0	0.39%	0.01%	0.01%	0.020%	-	0.0%
9	14,864	5	0	1	1	0	0.03%	0.00%	0.01%	0.007%	-	0.0%
10	14,971	53	0	1	1	0	0.35%	0.00%	0.01%	0.007%	-	0.0%
11	31,669	170	3	12	15	1	0.54%	0.01%	0.04%	0.047%	1 : 31,669	6.7%
12	12,839	44	0	1	1	1	0.34%	0.00%	0.01%	0.008%	1 : 12,839	100.0%
13	93,480	22	2	3	5	2	0.02%	0.00%	0.00%	0.005%	1 : 46,740	40.0%
14	41,417	259	0	7	7	0	0.63%	0.00%	0.02%	0.017%	-	0.0%
16	23,703	52	0	7	7	0	0.22%	0.00%	0.03%	0.030%	-	0.0%
17	62,545	425	0	35	35	0	0.68%	0.00%	0.06%	0.056%	-	0.0%
18	42,801	359	0	4	4	0	0.84%	0.00%	0.01%	0.009%	-	0.0%
19	40,476	70	0	12	12	7	0.17%	0.00%	0.03%	0.030%	1 : 5,782	58.3%
20	13,258	106	0	8	8	0	0.80%	0.00%	0.06%	0.060%	-	0.0%
21	11,598	256	0	4	4	0	2.21%	0.00%	0.03%	0.034%	-	0.0%
22	7,044	55	0	2	2	0	0.78%	0.00%	0.03%	0.028%	-	0.0%
23	14,986	49	2	5	7	0	0.33%	0.01%	0.03%	0.047%	-	0.0%
24	52,111	251	2	8	10	0	0.48%	0.00%	0.02%	0.019%	-	0.0%
25	7,165	40	0	3	3	0	0.56%	0.00%	0.04%	0.042%	-	0.0%
26	50,628	157	4	10	14	1	0.31%	0.01%	0.02%	0.028%	1 : 50,628	7.1%
27	9,301	33	0	3	3	0	0.35%	0.00%	0.03%	0.032%	-	0.0%
28	19,023	124	0	2	2	0	0.65%	0.00%	0.01%	0.011%	-	0.0%
29	24,894	49	0	3	3	0	0.20%	0.00%	0.01%	0.012%	-	0.0%
30	10,548	35	0	2	2	0	0.33%	0.00%	0.02%	0.019%	-	0.0%
31	26,824	73	1	0	1	0	0.27%	0.00%	0.00%	0.004%	-	0.0%
32	4,925	24	0	0	0	0	0.49%	0.00%	0.00%	0.000%	-	0.0%
33	12,985	39	0	2	2	0	0.30%	0.00%	0.02%	0.015%	-	0.0%
36	13,604	28	0	1	1	0	0.21%	0.00%	0.01%	0.007%	-	0.0%
37	8,416	79	0	2	2	1	0.94%	0.00%	0.02%	0.024%	1 : 8,416	50.0%
38	5,499	18	0	1	1	0	0.33%	0.00%	0.02%	0.018%	-	0.0%
全体	870,739	3,486	26	176	202	15	0.40%	0.00%	0.02%	0.023%	1 : 58,049	7.4%
						max	2.207%	0.039%	0.060%	0.060%		100.0%
						min	0.0235%	0.0000%	0.0000%	0.0000%		0.0%

タンデムマス検査集計結果

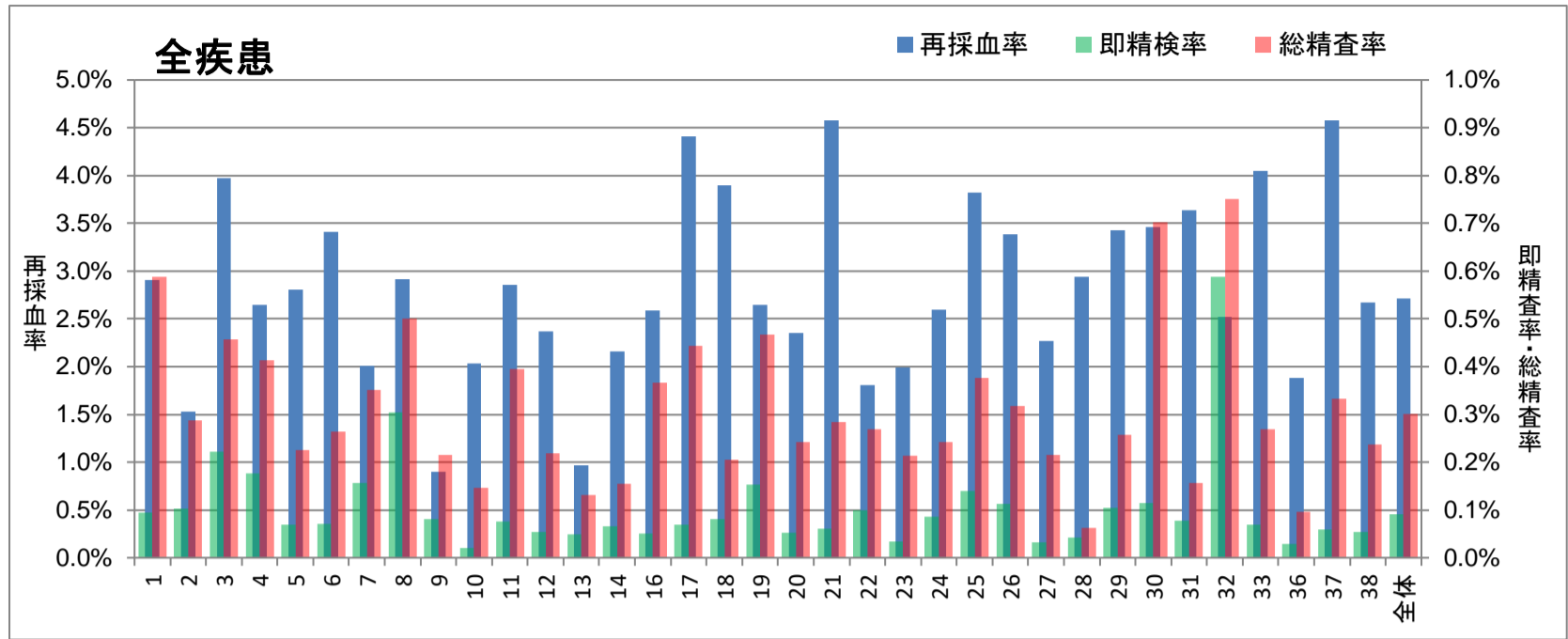
(2019年度結果)



ID	検査数	再採血数	即精検	再採血後精検	総精査数	発見患者数	再採血率	即精検率	再採血後精検率	総精査率	発見頻度	陽性適中率 (PPV)
1	57,136	189	10	18	28	9	0.33%	0.02%	0.03%	0.049%	1 : 6,348	32.1%
2	58,806	132	12	16	28	4	0.22%	0.02%	0.03%	0.048%	1 : 14,702	14.3%
3	20,761	98	8	16	24	8	0.47%	0.04%	0.08%	0.116%	1 : 2,595	33.3%
4	6,773	25	6	1	7	2	0.37%	0.09%	0.01%	0.103%	1 : 3,387	28.6%
5	17,355	126	7	5	12	2	0.73%	0.04%	0.03%	0.069%	1 : 8,678	16.7%
6	9,830	32	2	3	5	0	0.33%	0.02%	0.03%	0.051%	-	0.0%
7	13,349	24	5	3	8	1	0.18%	0.04%	0.02%	0.060%	1 : 13,349	12.5%
8	15,155	30	4	4	8	1	0.20%	0.03%	0.03%	0.053%	1 : 15,155	12.5%
9	14,864	40	1	5	6	1	0.27%	0.01%	0.03%	0.040%	1 : 14,864	16.7%
10	14,971	19	1	3	4	1	0.13%	0.01%	0.02%	0.027%	1 : 14,971	25.0%
11	31,669	38	11	8	19	4	0.12%	0.03%	0.03%	0.060%	1 : 7,917	21.1%
12	12,839	15	5	3	8	3	0.12%	0.04%	0.02%	0.062%	1 : 4,280	37.5%
13	93,480	58	22	9	31	13	0.06%	0.02%	0.01%	0.033%	1 : 7,191	41.9%
14	41,417	77	10	13	23	10	0.19%	0.02%	0.03%	0.056%	1 : 4,142	43.5%
16	23,703	41	6	4	10	3	0.17%	0.03%	0.02%	0.042%	1 : 7,901	30.0%
17	62,545	243	5	14	19	-	0.39%	0.01%	0.02%	0.030%	-	0.0%
18	42,801	242	16	14	30	4	0.57%	0.04%	0.03%	0.070%	1 : 10,700	13.3%
19	40,476	120	15	12	27	4	0.30%	0.04%	0.03%	0.067%	1 : 10,119	14.8%
20	13,258	25	2	6	8	2	0.19%	0.02%	0.05%	0.060%	1 : 6,629	25.0%
21	11,598	42	3	9	12	0	0.36%	0.03%	0.08%	0.103%	-	0.0%
22	7,044	8	1	3	4	0	0.11%	0.01%	0.04%	0.057%	-	0.0%
23	14,986	33	2	1	3	3	0.22%	0.01%	0.01%	0.020%	1 : 4,995	100.0%
24	52,111	174	24	22	46	-	0.33%	0.05%	0.04%	0.088%	-	0.0%
25	7,165	38	5	3	8	0	0.53%	0.07%	0.04%	0.112%	-	0.0%
26	50,628	112	22	15	37	7	0.22%	0.04%	0.03%	0.073%	1 : 7,233	18.9%
27	9,301	31	1	4	5	1	0.33%	0.01%	0.04%	0.054%	1 : 9,301	20.0%
28	19,023	59	2	0	2	2	0.31%	0.01%	0.00%	0.011%	1 : 9,512	100.0%
29	24,894	83	8	6	14	1	0.33%	0.03%	0.02%	0.056%	1 : 24,894	7.1%
30	10,548	32	2	4	6	1	0.30%	0.02%	0.04%	0.057%	1 : 10,548	16.7%
31	26,824	63	12	8	20	5	0.23%	0.04%	0.03%	0.075%	1 : 5,365	25.0%
32	4,925	10	13	0	13	0	0.20%	0.26%	0.00%	0.264%	-	0.0%
33	12,985	43	1	2	3	1	0.33%	0.01%	0.02%	0.023%	1 : 12,985	33.3%
36	13,604	20	1	1	2	0	0.15%	0.01%	0.01%	0.015%	-	0.0%
37	8,416	36	3	4	7	2	0.43%	0.04%	0.05%	0.083%	1 : 4,208	28.6%
38	5,499	8	2	1	3	0	0.15%	0.04%	0.02%	0.055%	-	0.0%
全体	870,739	2,366	250	240	490	95	0.27%	0.03%	0.03%	0.056%	1 : 9,166	19.4%
						max	0.726%	0.264%	0.078%	0.264%		100.0%
						min	0.062%	0.007%	0.000%	0.011%		0.0%

新生児スクリーニング検査集計結果(全疾患)

(2019年度結果)



ID	検査数	再採血数	即精検	再採血後精検	総精査数	発見患者数	再採血率	即精検率	再採血後精検率	総精査率	発見頻度	陽性適中率 (PPV)	
1	57,136	1,660	54	282	336	58	2.91%	0.09%	0.49%	0.588%	1:985	17.3%	
2	58,806	901	60	109	169	26	1.53%	0.10%	0.19%	0.287%	1:2,262	15.4%	
3	20,761	824	46	49	95	37	3.97%	0.22%	0.24%	0.458%	1:561	38.9%	
4	6,773	179	12	16	28	11	2.64%	0.18%	0.24%	0.413%	1:616	39.3%	
5	17,355	487	12	27	39	16	2.81%	0.07%	0.16%	0.225%	1:1,085	41.0%	
6	9,830	335	7	19	26	3	3.41%	0.07%	0.19%	0.264%	1:3,277	11.5%	
7	13,349	268	21	26	47	6	2.01%	0.16%	0.19%	0.352%	1:2,225	12.8%	
8	15,155	442	46	30	76	8	2.92%	0.30%	0.20%	0.501%	1:1,894	10.5%	
9	14,864	134	12	20	32	18	0.90%	0.08%	0.13%	0.215%	1:826	56.3%	
10	14,971	305	3	19	22	11	2.04%	0.02%	0.13%	0.147%	1:1,361	50.0%	
11	31,669	904	24	101	125	28	2.85%	0.08%	0.32%	0.395%	1:1,131	22.4%	
12	12,839	304	7	21	28	10	2.37%	0.05%	0.16%	0.218%	1:1,284	35.7%	
13	93,480	902	46	77	123	52	0.96%	0.05%	0.08%	0.132%	1:1,798	42.3%	
14	41,417	893	27	37	64	30	2.16%	0.07%	0.09%	0.155%	1:1,381	46.9%	
16	23,703	613	12	75	87	23	2.59%	0.05%	0.32%	0.367%	1:1,031	26.4%	
17	62,545	2,757	43	234	277	0	4.41%	0.07%	0.37%	0.443%	-	0.0%	
18	42,801	1,667	35	53	88	27	3.89%	0.08%	0.12%	0.206%	1:1,585	30.7%	
19	40,476	1,071	62	127	189	38	2.65%	0.15%	0.31%	0.467%	1:1,065	20.1%	
20	13,258	312	7	25	32	8	2.35%	0.05%	0.19%	0.241%	1:1,657	25.0%	
21	11,598	531	7	26	33	0	4.58%	0.06%	0.22%	0.285%	-	0.0%	
22	7,044	127	7	12	19	5	1.80%	0.10%	0.17%	0.270%	1:1,409	26.3%	
23	14,986	298	5	27	32	8	1.99%	0.03%	0.18%	0.214%	1:1,873	25.0%	
24	52,111	1,352	45	81	126	0	2.59%	0.09%	0.16%	0.242%	-	0.0%	
25	7,165	274	10	17	27	6	3.82%	0.14%	0.24%	0.377%	1:1,194	22.2%	
26	50,628	1,712	57	104	161	46	3.38%	0.11%	0.21%	0.318%	1:1,101	28.6%	
27	9,301	211	3	17	20	6	2.27%	0.03%	0.18%	0.215%	1:1,550	30.0%	
28	19,023	560	8	4	12	4	2.94%	0.04%	0.02%	0.063%	1:4,756	33.3%	
29	24,894	853	26	38	64	11	3.43%	0.10%	0.15%	0.257%	1:2,263	17.2%	
30	10,548	365	12	62	74	12	3.46%	0.11%	0.59%	0.702%	1:879	16.2%	
31	26,824	975	21	21	42	14	3.63%	0.08%	0.08%	0.157%	1:1,916	33.3%	
32	4,925	124	29	8	37	0	2.52%	0.59%	0.16%	0.751%	-	0.0%	
33	12,985	526	9	26	35	1	4.05%	0.07%	0.20%	0.270%	1:12,985	2.9%	
36	13,604	256	4	9	13	0	1.88%	0.03%	0.07%	0.096%	-	0.0%	
37	8,416	385	5	23	28	12	4.57%	0.06%	0.27%	0.333%	1:701	42.9%	
38	5,499	147	3	10	13	4	2.67%	0.05%	0.18%	0.236%	1:1,375	30.8%	
全体	870,739	23,654	787	1,832	2,619	539	2.72%	0.09%	0.21%	0.301%	1:1,615	20.6%	
							max	4.578%	0.589%	0.588%	0.751%		56.3%
							min	0.902%	0.020%	0.021%	0.063%		0.0%