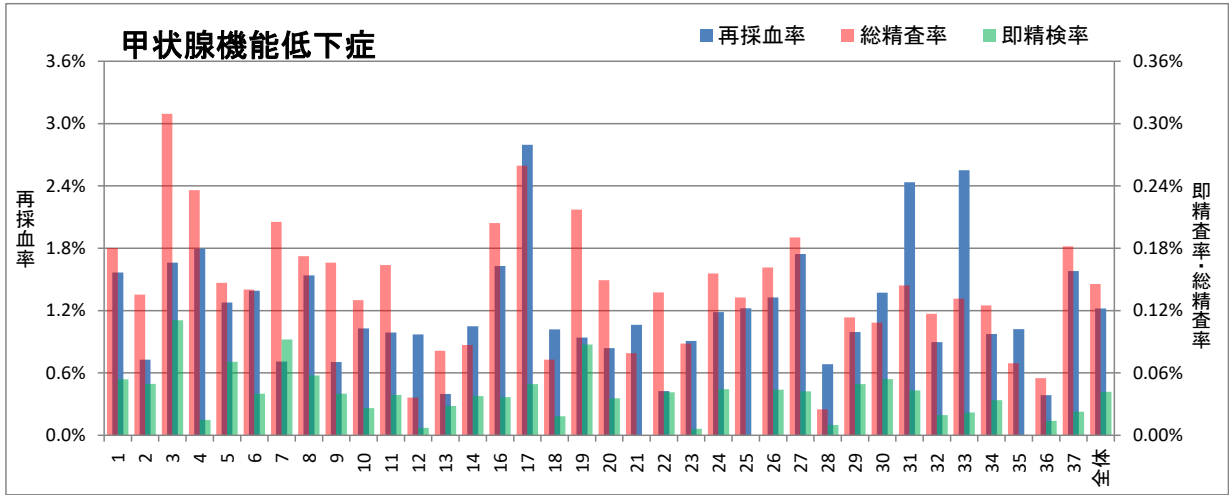


甲状腺機能低下症検査集計結果

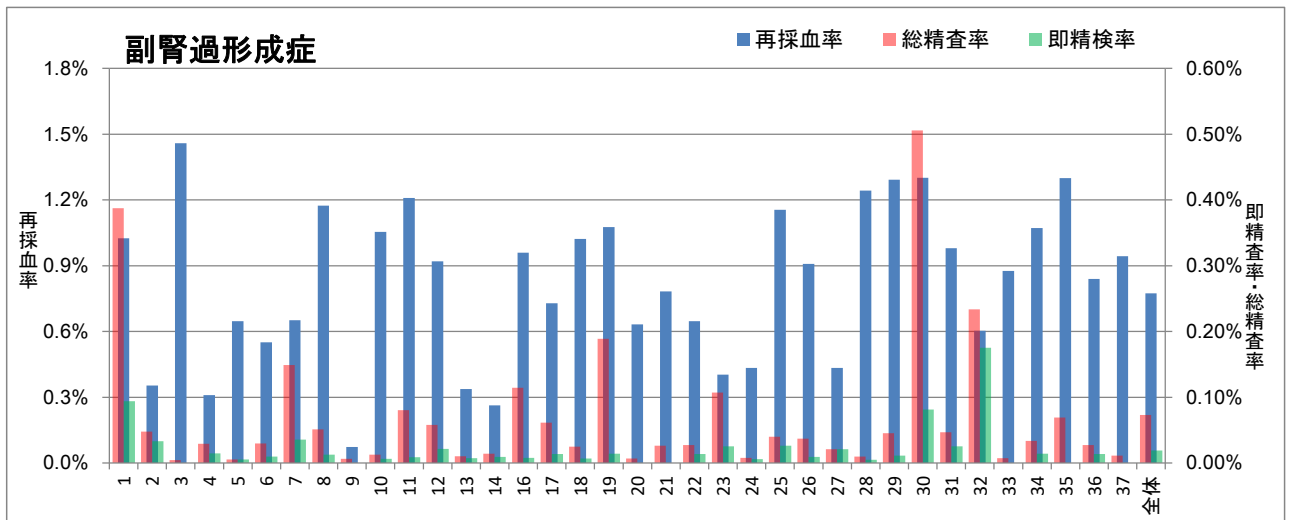
(2018年度検査結果)



ID	検査数	再採血数	即精査	再採血後精査	総精査数	発見患者数	再採血率	即精査率	再採血後精査率	総精査率	発見頻度	陽性適中率 (PPV)
1	59,384	930	32	75	107	30	1.57%	0.05%	0.13%	0.180%	1:1,979	28.0%
2	60,537	441	30	52	82	30	0.73%	0.05%	0.09%	0.135%	1:2,018	36.6%
3	21,662	360	24	43	67	25	1.66%	0.11%	0.20%	0.309%	1:866	37.3%
4	6,785	122	1	15	16	11	1.80%	0.01%	0.22%	0.236%	1:617	68.8%
5	18,393	235	13	14	27	11	1.28%	0.07%	0.08%	0.147%	1:1,672	40.7%
6	9,988	139	4	10	14	3	1.39%	0.04%	0.10%	0.140%	1:3,329	21.4%
7	14,110	100	13	16	29	10	0.71%	0.11%	0.11%	0.206%	1:1,411	34.5%
8	15,661	241	9	18	27	10	1.54%	0.06%	0.11%	0.172%	1:1,566	37.0%
9	15,038	106	6	19	25	0	0.70%	0.04%	0.13%	0.166%	-	0.0%
10	15,369	158	4	16	20	14	1.03%	0.10%	0.10%	0.130%	1:1,098	70.0%
11	33,562	332	13	42	55	25	0.99%	0.04%	0.13%	0.164%	1:1,342	45.5%
12	13,801	134	1	4	5	3	0.97%	0.01%	0.03%	0.036%	1:4,600	60.0%
13	95,832	382	27	51	78	44	0.40%	0.03%	0.05%	0.081%	1:2,178	56.4%
14	42,573	447	16	21	37	25	1.05%	0.04%	0.05%	0.087%	1:1,703	67.6%
16	24,488	399	9	41	50	19	1.63%	0.04%	0.17%	0.204%	1:1,289	38.0%
17	65,106	1,820	32	137	169	15	2.80%	0.05%	0.21%	0.260%	-	0.0%
18	43,919	448	8	24	32	15	1.02%	0.02%	0.05%	0.073%	1:2,928	46.9%
19	42,358	398	37	55	92	28	0.94%	0.09%	0.13%	0.217%	1:1,513	30.4%
20	14,058	118	5	16	21	11	0.84%	0.04%	0.11%	0.149%	1:1,278	52.4%
21	11,372	121	0	9	9	1	1.06%	0.00%	0.08%	0.079%	1:11,372	11.1%
22	7,270	31	3	7	10	3	0.43%	0.04%	0.10%	0.138%	1:2,423	30.0%
23	15,864	144	1	13	14	8	0.91%	0.01%	0.08%	0.088%	1:1,983	57.1%
24	49,476	587	22	55	77	4	1.19%	0.04%	0.11%	0.156%	-	0.0%
25	7,533	92	0	10	10	2	1.22%	0.00%	0.13%	0.133%	1:3,767	20.0%
26	43,346	575	19	51	70	17	1.33%	0.04%	0.12%	0.161%	1:2,550	24.3%
27	9,457	165	4	14	18	13	1.74%	0.04%	0.15%	0.190%	1:727	72.2%
28	20,041	137	2	3	5	4	0.68%	0.01%	0.01%	0.025%	1:5,010	80.0%
29	26,450	263	13	17	30	10	0.99%	0.05%	0.06%	0.113%	1:2,645	33.3%
30	11,072	152	6	6	12	4	1.37%	0.05%	0.05%	0.108%	1:2,768	33.3%
31	27,752	676	12	28	40	21	2.44%	0.04%	0.10%	0.144%	1:1,322	52.5%
32	5,134	46	1	5	6	2	0.90%	0.02%	0.10%	0.117%	1:2,567	33.3%
33	13,684	349	3	15	18	10	2.55%	0.02%	0.11%	0.132%	1:1,368	55.6%
34	20,794	203	7	19	26	5	0.98%	0.03%	0.09%	0.125%	-	0.0%
35	5,772	59	0	4	4	2	1.02%	0.00%	0.07%	0.069%	1:2,886	50.0%
36	14,517	56	2	6	8	2	0.39%	0.01%	0.04%	0.055%	1:7,259	25.0%
37	8,794	139	2	14	16	5	1.58%	0.02%	0.16%	0.182%	1:1,759	31.3%
全体	910,952	11,105	381	945	1,326	418	1.22%	0.04%	0.10%	0.146%	1:2,179	31.5%
							max 2.795%	0.111%	0.221%	0.309%		80.0%
							min 0.3858%	0.0000%	0.0150%	0.0249%		0.0%

副腎過形成症検査集計結果

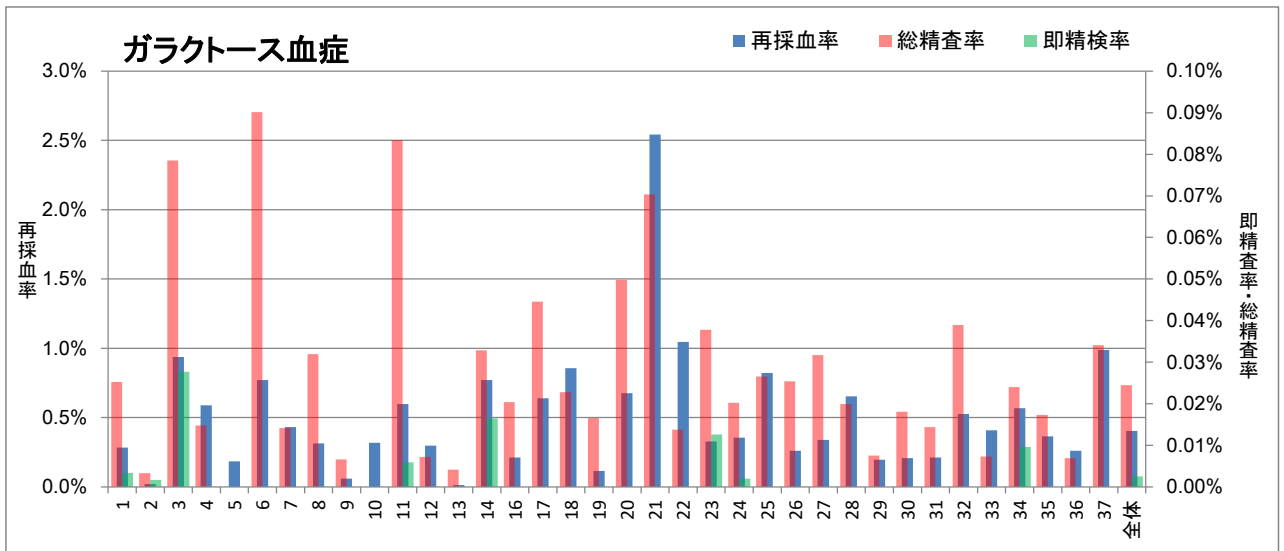
(2018年度検査結果)



ID	検査数	再採血数	即精検	再採血後精検	総精査数	発見患者数	再採血率	即精検率	再採血後精検率	総精査率	発見頻度	陽性適中率 (PPV)
1	59,384	609	56	174	230	1	1.03%	0.09%	0.29%	0.387%	1:59,384	0.4%
2	60,537	214	20	9	29	3	0.35%	0.03%	0.01%	0.048%	1:20,179	10.3%
3	21,662	316	0	1	1	0	1.46%	0.00%	0.00%	0.005%	-	0.0%
4	6,785	21	1	1	2	1	0.31%	0.01%	0.01%	0.029%	1:6,785	50.0%
5	18,393	119	1	0	1	0	0.65%	0.01%	0.00%	0.005%	-	0.0%
6	9,988	55	1	2	3	0	0.55%	0.01%	0.02%	0.030%	-	0.0%
7	14,110	92	5	16	21	1	0.65%	0.04%	0.11%	0.149%	1:14,110	4.8%
8	15,661	184	2	6	8	0	1.17%	0.01%	0.04%	0.051%	-	-
9	15,038	11	0	1	1	0	0.07%	0.00%	0.01%	0.007%	-	0.0%
10	15,369	162	1	1	2	1	1.05%	0.01%	0.01%	0.013%	1:15,369	50.0%
11	33,562	406	3	24	27	2	1.21%	0.01%	0.07%	0.080%	1:16,781	7.4%
12	13,801	127	3	5	8	1	0.92%	0.02%	0.04%	0.058%	1:13,801	12.5%
13	95,832	324	7	3	10	6	0.34%	0.01%	0.00%	0.010%	1:15,972	60.0%
14	42,573	112	4	2	6	2	0.26%	0.01%	0.00%	0.014%	1:21,287	33.3%
16	24,488	235	2	26	28	3	0.96%	0.01%	0.11%	0.114%	1:8,163	10.7%
17	65,106	475	9	31	40	1	0.73%	0.01%	0.05%	0.061%	-	0.0%
18	43,919	449	3	8	11	2	1.02%	0.01%	0.02%	0.025%	1:21,966	18.2%
19	42,358	456	6	74	80	3	1.08%	0.01%	0.17%	0.189%	1:14,119	3.8%
20	14,058	89	0	1	1	0	0.63%	0.00%	0.01%	0.007%	-	0.0%
21	11,372	89	0	3	3	0	0.78%	0.00%	0.03%	0.026%	-	0.0%
22	7,270	47	1	1	2	1	0.65%	0.01%	0.01%	0.028%	1:7,270	50.0%
23	15,864	64	4	13	17	4	0.40%	0.03%	0.08%	0.107%	1:3,966	23.5%
24	49,476	215	3	1	4	1	0.43%	0.01%	0.00%	0.008%	-	0.0%
25	7,533	87	2	1	3	1	1.15%	0.03%	0.01%	0.040%	1:7,533	33.3%
26	43,346	394	4	12	16	1	0.91%	0.01%	0.03%	0.037%	1:43,346	6.3%
27	9,457	41	2	0	2	2	0.43%	0.02%	0.00%	0.021%	1:4,729	100.0%
28	20,041	249	1	1	2	2	1.24%	0.00%	0.00%	0.010%	1:10,021	100.0%
29	26,450	342	3	9	12	2	1.29%	0.01%	0.03%	0.045%	1:13,225	16.7%
30	11,072	144	9	47	56	1	1.30%	0.08%	0.42%	0.506%	1:11,072	1.8%
31	27,752	272	7	6	13	3	0.98%	0.03%	0.02%	0.047%	1:9,251	23.1%
32	5,134	31	9	3	12	0	0.60%	0.18%	0.06%	0.234%	-	0.0%
33	13,684	120	0	1	1	0	0.88%	0.00%	0.01%	0.007%	-	0.0%
34	20,794	223	3	4	7	1	1.07%	0.01%	0.02%	0.034%	-	0.0%
35	5,772	75	0	4	4	0	1.30%	0.00%	0.07%	0.069%	-	0.0%
36	14,517	122	2	2	4	1	0.84%	0.01%	0.01%	0.028%	1:14,517	25.0%
37	8,794	83	0	1	1	0	0.94%	0.00%	0.01%	0.011%	-	0.0%
全体	910,952	7,054	174	494	668	44	0.77%	0.02%	0.05%	0.073%	1:20,703	6.6%
							max 1.459%	0.175%	0.424%	0.506%		100.0%
							min 0.0731%	0.0000%	0.0000%	0.0046%		0.0%

ガラクトース血症検査集計結果

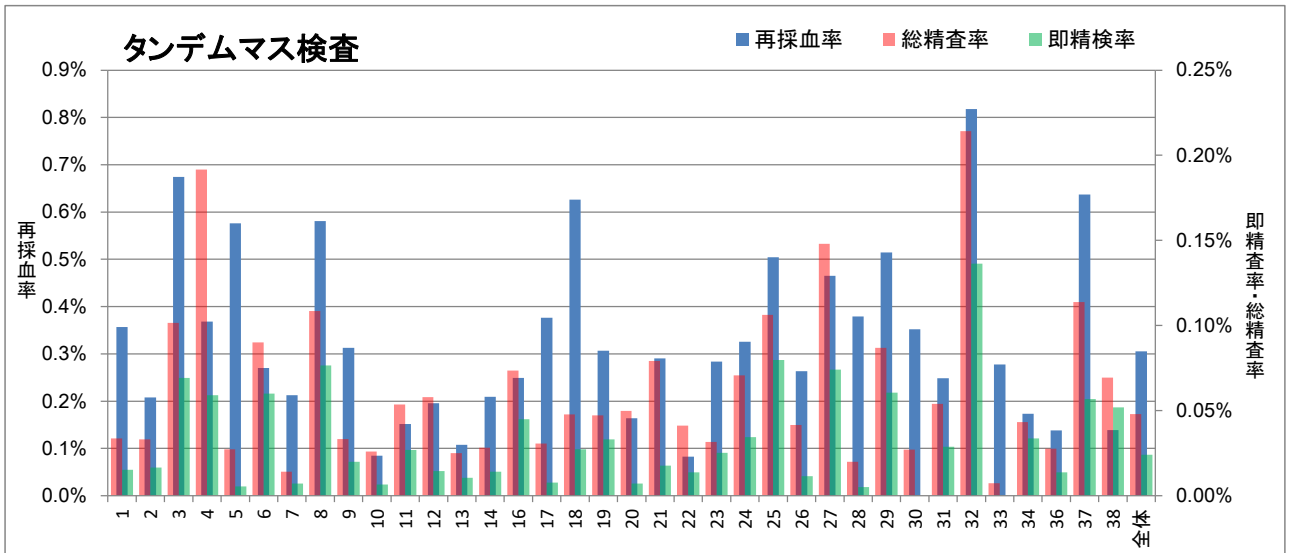
(2018年度検査結果)



ID	検査数	再採血数	即精検	再採血後精検	総精査数	発見患者数	再採血率	即精検率	再採血後精検率	総精査率	発見頻度	陽性適中率 (PPV)
1	59,384	169	2	13	15	0	0.28%	0.00%	0.02%	0.025%	-	0.0%
2	60,537	12	1	1	2	1	0.02%	0.00%	0.00%	0.003%	1:60,537	50.0%
3	21,662	203	6	11	17	0	0.94%	0.03%	0.05%	0.078%	-	0.0%
4	6,785	40	0	1	1	0	0.59%	0.00%	0.01%	0.015%	-	0.0%
5	18,393	34	0	0	0	0	0.18%	0.00%	0.00%	0.000%	-	0.0%
6	9,988	77	0	9	9	0	0.77%	0.00%	0.09%	0.090%	-	0.0%
7	14,110	61	0	2	2	0	0.43%	0.00%	0.01%	0.014%	-	0.0%
8	15,661	49	0	5	5	0	0.31%	0.00%	0.03%	0.032%	-	0.0%
9	15,038	9	0	1	1	0	0.06%	0.00%	0.01%	0.007%	-	0.0%
10	15,369	49	0	0	0	0	0.32%	0.00%	0.00%	0.000%	-	0.0%
11	33,562	201	2	26	28	2	0.60%	0.01%	0.08%	0.083%	1:16,781	7.1%
12	13,801	41	0	1	1	0	0.30%	0.00%	0.01%	0.007%	-	0.0%
13	95,832	14	0	4	4	1	0.01%	0.00%	0.00%	0.004%	1:95,832	25.0%
14	42,573	328	7	7	14	0	0.77%	0.02%	0.02%	0.033%	-	0.0%
16	24,488	52		5	5		0.21%	0.00%	0.02%	0.020%	-	0.0%
17	65,106	417	0	29	29		0.64%	0.00%	0.04%	0.045%	-	0.0%
18	43,919	376	0	10	10	0	0.86%	0.00%	0.02%	0.023%	-	0.0%
19	42,358	49	0	7	7	2	0.12%	0.00%	0.02%	0.017%	1:21,179	28.6%
20	14,058	95	0	7	7	0	0.68%	0.00%	0.05%	0.050%	-	0.0%
21	11,372	289	0	8	8	0	2.54%	0.00%	0.07%	0.070%	-	0.0%
22	7,270	76		1	1		1.05%	0.00%	0.01%	0.014%	-	0.0%
23	15,864	52	2	4	6	1	0.33%	0.01%	0.03%	0.038%	1:15,864	16.7%
24	49,476	176	1	9	10		0.36%	0.00%	0.02%	0.020%	-	0.0%
25	7,533	62	0	2	2	0	0.82%	0.00%	0.03%	0.027%	-	0.0%
26	43,346	113	0	11	11	2	0.26%	0.00%	0.03%	0.025%	1:21,673	18.2%
27	9,457	32	0	3	3	0	0.34%	0.00%	0.03%	0.032%	-	0.0%
28	20,041	131	0	4	4	1	0.65%	0.00%	0.02%	0.020%	1:20,041	25.0%
29	26,450	52	0	2	2	0	0.20%	0.00%	0.01%	0.008%	-	0.0%
30	11,072	23	0	2	2	0	0.21%	0.00%	0.02%	0.018%	-	0.0%
31	27,752	59	0	4	4	0	0.21%	0.00%	0.01%	0.014%	-	0.0%
32	5,134	27	0	2	2	0	0.53%	0.00%	0.04%	0.039%	-	0.0%
33	13,684	56	0	1	1	0	0.41%	0.00%	0.01%	0.007%	-	0.0%
34	20,794	118	2	3	5		0.57%	0.01%	0.01%	0.024%	-	0.0%
35	5,772	21	0	1	1	0	0.36%	0.00%	0.02%	0.017%	-	0.0%
36	14,517	38	0	1	1	0	0.26%	0.00%	0.01%	0.007%	-	0.0%
37	8,794	87	0	3	3	1	0.99%	0.00%	0.03%	0.034%	1:8,794	33.3%
全体	910,952	3,688	23	200	223	11	0.40%	0.00%	0.02%	0.024%	1:82,814	4.9%
				max			2.541%	0.028%	0.090%	0.090%		50.0%
				min			0.0146%	0.0000%	0.0000%	0.0000%		0.0%

# タンデムマス検査集計結果

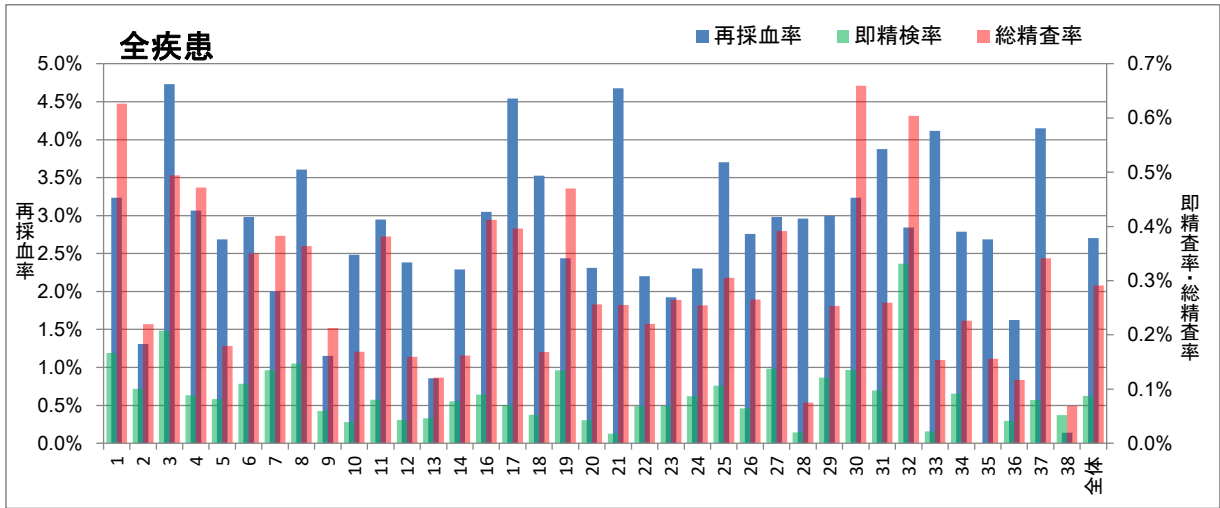
(2018年度検査結果)



ID	検査数	再採血数	即精検	再採血後精検	総精査数	発見患者数	再採血率	即精検率	再採血後精検率	総精査率	発見頻度	陽性適中率 (PPV)
1	59,384	212	9	11	20	5	0.36%	0.02%	0.02%	0.034%	1:11,877	25.0%
2	60,537	126	10	10	20	4	0.21%	0.02%	0.02%	0.033%	1:15,134	20.0%
3	21,662	146	15	7	22	0	0.67%	0.07%	0.03%	0.102%	-	0.0%
4	6,785	25	4	9	13	0	0.37%	0.06%	0.13%	0.192%	-	0.0%
5	18,393	106	1	4	5	1	0.58%	0.01%	0.02%	0.027%	1:18,393	20.0%
6	9,988	27	6	3	9	1	0.27%	0.06%	0.03%	0.090%	1:9,988	11.1%
7	14,110	30	1	1	2	0	0.21%	0.01%	0.01%	0.014%	-	0.0%
8	15,661	91	12	5	17	3	0.58%	0.08%	0.03%	0.109%	1:5,220	17.6%
9	15,038	47	3	2	5	4	0.31%	0.02%	0.01%	0.033%	1:3,760	80.0%
10	15,369	13	1	3	4	0	0.08%	0.01%	0.02%	0.026%	-	0.0%
11	33,562	51	9	9	18	3	0.15%	0.03%	0.03%	0.054%	1:11,187	16.7%
12	13,801	27	2	6	8	0	0.20%	0.01%	0.04%	0.058%	-	0.0%
13	95,832	103	10	14	24	9	0.11%	0.01%	0.01%	0.025%	1:10,648	37.5%
14	42,573	89	6	6	12	2	0.21%	0.01%	0.01%	0.028%	1:21,287	16.7%
16	24,488	61	11	7	18	-	0.25%	0.04%	0.03%	0.074%	-	0.0%
17	65,106	245	5	15	20	-	0.38%	0.01%	0.02%	0.031%	-	0.0%
18	43,919	275	12	9	21	3	0.63%	0.03%	0.02%	0.048%	1:14,640	14.3%
19	42,358	130	14	6	20	5	0.31%	0.03%	0.01%	0.047%	1:8,472	25.0%
20	14,058	23	1	6	7	4	0.16%	0.01%	0.04%	0.050%	1:3,515	57.1%
21	11,372	33	2	7	9	2	0.29%	0.02%	0.06%	0.079%	1:5,686	22.2%
22	7,270	6	1	2	3	2	0.08%	0.01%	0.03%	0.041%	1:3,635	66.7%
23	15,864	45	4	1	5	0	0.28%	0.03%	0.01%	0.032%	-	0.0%
24	49,476	161	17	18	35	-	0.33%	0.03%	0.04%	0.071%	-	0.0%
25	7,533	38	6	2	8	0	0.50%	0.08%	0.03%	0.106%	-	0.0%
26	43,346	114	5	13	18	1	0.26%	0.01%	0.03%	0.042%	1:43,346	5.6%
27	9,457	44	7	7	14	4	0.47%	0.07%	0.07%	0.148%	1:2,364	28.6%
28	20,041	76	1	3	4	0	0.38%	0.00%	0.01%	0.020%	-	0.0%
29	26,450	136	16	7	23	5	0.51%	0.06%	0.03%	0.087%	1:5,290	21.7%
30	11,072	39	0	3	3	0	0.35%	0.00%	0.03%	0.027%	-	0.0%
31	27,752	69	8	7	15	2	0.25%	0.03%	0.03%	0.054%	1:13,876	13.3%
32	5,134	42	7	4	11	0	0.82%	0.14%	0.08%	0.214%	-	0.0%
33	13,684	38	0	1	1	0	0.28%	0.00%	0.01%	0.007%	-	0.0%
34	20,794	36	7	2	9	-	0.17%	0.03%	0.01%	0.043%	-	0.0%
36	14,517	20	2	2	4	0	0.14%	0.01%	0.01%	0.028%	-	0.0%
37	8,794	56	5	5	10	1	0.64%	0.06%	0.06%	0.114%	1:8,794	10.0%
38	5,772	8	3	1	4	1	0.14%	0.05%	0.02%	0.069%	1:5,772	25.0%
全体	910,952	2,780	220	217	437	61	0.31%	0.02%	0.02%	0.048%	1:14,934	14.0%
							max 0.818%	0.136%	0.133%	0.214%		80.0%
							min 0.083%	0.000%	0.006%	0.000%		0.0%

新生児スクリーニング検査集計結果(全疾患)

(2018年度検査結果)



ID	検査数	再採血数	即精検	再採血後精検	総精査数	発見患者数	再採血率	即精検率	再採血後精検率	総精査率	発見頻度	陽性適中率 (PPV)
1	59,384	1,920	99	273	372	36	3.23%	0.17%	0.48%	0.626%	1:1,650	9.7%
2	60,537	793	61	72	133	38	1.31%	0.10%	0.12%	0.220%	1:1,593	28.6%
3	21,662	1,025	45	62	107	25	4.73%	0.21%	0.29%	0.494%	1:866	23.4%
4	6,785	208	6	26	32	12	3.07%	0.09%	0.38%	0.472%	1:565	37.5%
5	18,393	494	15	18	33	12	2.69%	0.08%	0.10%	0.179%	1:1,533	36.4%
6	9,988	298	11	24	35	4	2.98%	0.11%	0.24%	0.350%	1:2,497	11.4%
7	14,110	283	19	35	54	11	2.01%	0.13%	0.25%	0.383%	1:1,283	20.4%
8	15,661	565	23	34	57	13	3.61%	0.15%	0.22%	0.364%	1:1,205	22.8%
9	15,038	173	9	23	32	4	1.15%	0.06%	0.15%	0.213%	1:3,760	12.5%
10	15,369	382	6	20	26	15	2.49%	0.04%	0.13%	0.169%	1:1,025	57.7%
11	33,562	990	27	101	128	32	2.95%	0.08%	0.30%	0.381%	1:1,049	25.0%
12	13,801	329	6	16	22	4	2.38%	0.04%	0.12%	0.159%	1:3,450	18.2%
13	95,832	823	44	72	116	60	0.86%	0.05%	0.08%	0.121%	1:1,597	51.7%
14	42,573	976	33	36	69	29	2.29%	0.08%	0.08%	0.162%	1:1,468	42.0%
16	24,488	747	22	79	101	22	3.05%	0.09%	0.32%	0.412%	1:1,113	21.8%
17	65,106	2,957	46	212	258	0	4.54%	0.07%	0.33%	0.396%	-	0.0%
18	43,919	1,548	23	51	74	20	3.52%	0.05%	0.12%	0.168%	1:2,196	27.0%
19	42,358	1,033	57	142	199	38	2.44%	0.13%	0.34%	0.470%	1:1,115	19.1%
20	14,058	325	6	30	36	15	2.31%	0.04%	0.21%	0.256%	1:937	41.7%
21	11,372	532	2	27	29	3	4.68%	0.02%	0.24%	0.255%	1:3,791	10.3%
22	7,270	160	5	11	16	6	2.20%	0.07%	0.15%	0.220%	1:1,212	37.5%
23	15,864	305	11	31	42	13	1.92%	0.07%	0.20%	0.265%	1:1,220	31.0%
24	49,476	1,139	43	83	126	0	2.30%	0.09%	0.17%	0.255%	-	0.0%
25	7,533	279	8	15	23	3	3.70%	0.11%	0.20%	0.305%	1:2,511	13.0%
26	43,346	1,196	28	87	115	21	2.76%	0.06%	0.20%	0.265%	1:2,064	18.3%
27	9,457	282	13	24	37	19	2.98%	0.14%	0.25%	0.391%	1:498	51.4%
28	20,041	593	4	11	15	7	2.96%	0.02%	0.05%	0.075%	1:2,863	46.7%
29	26,450	793	32	35	67	17	3.00%	0.12%	0.13%	0.253%	1:1,556	25.4%
30	11,072	358	15	58	73	5	3.23%	0.14%	0.52%	0.659%	1:2,214	6.8%
31	27,752	1,076	27	45	72	26	3.88%	0.10%	0.16%	0.259%	1:1,067	36.1%
32	5,134	146	17	14	31	2	2.84%	0.33%	0.27%	0.604%	1:2,567	6.5%
33	13,684	563	3	18	21	10	4.11%	0.02%	0.13%	0.153%	1:1,368	47.6%
34	20,794	580	19	28	47	0	2.79%	0.09%	0.13%	0.226%	-	0.0%
35	5,772	155	0	9	9	2	2.69%	0.00%	0.16%	0.156%	1:2,886	22.2%
36	14,517	236	6	11	17	3	1.63%	0.04%	0.08%	0.117%	1:4,839	17.6%
37	8,794	365	7	23	30	7	4.15%	0.08%	0.26%	0.341%	1:1,256	23.3%
38	5,772	8	3	1	4	1	0.14%	0.05%	0.02%	0.069%	1:5,772	25.0%
全体	910,952	24,627	798	1,856	2,654	534	2.70%	0.09%	0.20%	0.291%	1:1,706	20.1%
max							4.732%	0.331%	0.524%	0.659%		57.7%
min							0.139%	0.000%	0.017%	0.000%		0.0%